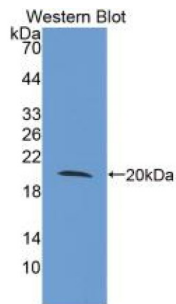


## Toll Like Receptor 3 (TLR3) Antibody

Catalogue No.: abx131783



Western blot analysis of recombinant Human TLR3.

Toll Like Receptor 3 Antibody is a Mouse Monoclonal against Toll Like Receptor 3.

<b>Target:</b>	Toll Like Receptor 3 (TLR3)
<b>Clonality:</b>	Monoclonal
<b>Reactivity:</b>	Human
<b>Tested Applications:</b>	WB, IHC, IF/ICC
<b>Host:</b>	Mouse
<b>Recommended dilutions:</b>	WB: 0.5-2 µg/ml, IHC: 5-20 µg/ml, IF/ICC: 5-20 µg/ml. Optimal dilutions/concentrations should be determined by the end user.
<b>Conjugation:</b>	Unconjugated
<b>Immunogen:</b>	Leu404-Leu532
<b>Isotype:</b>	IgG <sub>1</sub> , Kappa
<b>Form:</b>	Liquid
<b>Purification:</b>	Purified by Protein A and Protein G affinity chromatography.
<b>Storage:</b>	Aliquot and store at -20°C. Avoid repeated freeze/thaw cycles.
<b>UniProt Primary AC:</b>	O15455 ( <a href="#">UniProt</a> , <a href="#">ExpASY</a> )
<b>Gene Symbol:</b>	TLR3
<b>GeneID:</b>	<a href="#">7098</a>

# Datasheet

Version: 1.0.0  
Revision date: 18 Dec 2024



**OMIM:** [603029](#)

**HGNC:** 11849

**KEGG:** hsa:7098

**Ensembl:** ENSG00000164342

**String:** [9606.ENSP00000296795](#)

**Buffer:** 0.01 M PBS, pH 7.4, containing 0.05% Proclin-300, 50% glycerol.

**Note:** This product is for research use only.

For Reference Only