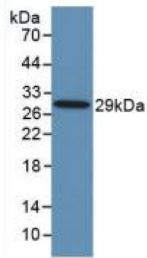


Toll Like Receptor 8 (TLR8) Antibody

Catalogue No.: abx131785



Western blot analysis of recombinant Human TLR8.

Toll Like Receptor 8 Antibody is a Mouse Monoclonal against Toll Like Receptor 8.

Target:	Toll Like Receptor 8 (TLR8)
Clonality:	Monoclonal
Reactivity:	Human
Tested Applications:	WB, IHC, IF/ICC
Host:	Mouse
Recommended dilutions:	WB: 0.01-2 µg/ml, IHC: 5-20 µg/ml, IF/ICC: 5-20 µg/ml. Optimal dilutions/concentrations should be determined by the end user.
Conjugation:	Unconjugated
Immunogen:	Leu844-Lys1039
Isotype:	IgG _{2a} Kappa
Form:	Liquid
Purification:	Purified by Protein A and Protein G affinity chromatography.
Storage:	Aliquot and store at -20°C. Avoid repeated freeze/thaw cycles.
UniProt Primary AC:	Q9NR97 (UniProt , ExpASY)
String:	9606.ENSP00000312082
Buffer:	0.01 M PBS, pH 7.4, containing 0.05% Proclin-300, 50% glycerol.

Datasheet

Version: 3.0.0

Revision date: 25 Jan 2025



Note: This product is for research use only.

For Reference Only