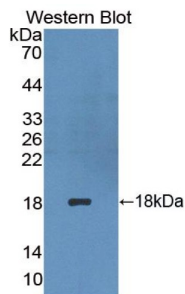


## Platelet/Endothelial Cell Adhesion Molecule (PECAM1) Antibody

Catalogue No.: abx131788



Western blot analysis of the recombinant protein.

Platelet/Endothelial Cell Adhesion Molecule Antibody is a Mouse Monoclonal against Platelet/Endothelial Cell Adhesion Molecule.

<b>Target:</b>	Platelet/Endothelial Cell Adhesion Molecule (PECAM1)
<b>Clonality:</b>	Monoclonal
<b>Reactivity:</b>	Human
<b>Tested Applications:</b>	WB, IHC, IF/ICC
<b>Host:</b>	Mouse
<b>Recommended dilutions:</b>	WB: 0.01-5 µg/ml, IHC: 5-30 µg/ml, IF/ICC: 5-30 µg/ml. Optimal dilutions/concentrations should be determined by the end user.
<b>Conjugation:</b>	Unconjugated
<b>Isotype:</b>	IgG <sub>1</sub> , Kappa
<b>Form:</b>	Liquid
<b>Purification:</b>	Purified by Protein A and Protein G affinity chromatography.
<b>Storage:</b>	Aliquot and store at -20°C. Avoid repeated freeze/thaw cycles.
<b>UniProt Primary AC:</b>	P16284 ( <a href="#">UniProt</a> , <a href="#">ExPASy</a> )
<b>KEGG:</b>	hsa:5175
<b>String:</b>	<a href="#">9606.ENSP00000457421</a>

# Datasheet

Version: 3.0.0

Revision date: 11 Mar 2025



**Buffer:** 0.01 M PBS, pH 7.4, containing 0.05% Proclin-300, 50% glycerol.

**Note:** THIS PRODUCT IS FOR RESEARCH USE ONLY. NOT FOR USE IN DIAGNOSTIC, THERAPEUTIC OR COSMETIC PROCEDURES. NOT FOR HUMAN OR ANIMAL CONSUMPTION.

For Reference Only