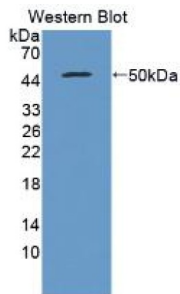


## Interferon Beta (IFN $\beta$ ) Antibody

Catalogue No.: abx131926

Western blot analysis of recombinant Pig IFN $\beta$ .

Interferon Beta Antibody is a Mouse Monoclonal against Interferon Beta.

<b>Target:</b>	Interferon Beta (IFN $\beta$ )
<b>Clonality:</b>	Monoclonal
<b>Reactivity:</b>	Pig
<b>Tested Applications:</b>	WB, IHC, IF/ICC
<b>Host:</b>	Mouse
<b>Recommended dilutions:</b>	WB: 0.01-2 $\mu$ g/ml, IHC: 5-20 $\mu$ g/ml, IF/ICC: 5-20 $\mu$ g/ml. Optimal dilutions/concentrations should be determined by the end user.
<b>Conjugation:</b>	Unconjugated
<b>Immunogen:</b>	Met22-Asn186
<b>Isotype:</b>	IgG <sub>2b</sub> Kappa
<b>Form:</b>	Liquid
<b>Purification:</b>	Purified by Protein A and Protein G affinity chromatography.
<b>Storage:</b>	Aliquot and store at -20°C. Avoid repeated freeze/thaw cycles.
<b>UniProt Primary AC:</b>	Q29412 ( <a href="#">UniProt</a> , <a href="#">ExPASy</a> )
<b>String:</b>	<a href="#">9823.ENSSSCP00000005550</a>
<b>Buffer:</b>	0.01 M PBS, pH 7.4, containing 0.05% Proclin-300, 50% glycerol.

# Datasheet

Version: 2.0.0

Revision date: 12 Mar 2025



**Concentration:** 0.7 mg/ml

**Note:** THIS PRODUCT IS FOR RESEARCH USE ONLY. NOT FOR USE IN DIAGNOSTIC, THERAPEUTIC OR COSMETIC PROCEDURES. NOT FOR HUMAN OR ANIMAL CONSUMPTION.

For Reference Only