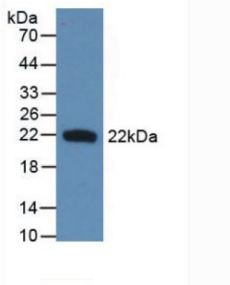


# Datasheet

Version: 1.0.0  
Revision date: 16 Oct 2024

## Interferon Beta (IFN $\beta$ ) Antibody

Catalogue No.: abx131928



Western blot analysis of recombinant Chicken IFN $\beta$ .

Interferon Beta Antibody is a Mouse Monoclonal against Interferon Beta.

<b>Target:</b>	Interferon Beta (IFN $\beta$ )
<b>Clonality:</b>	Monoclonal
<b>Reactivity:</b>	Chicken
<b>Tested Applications:</b>	WB, IHC, IF/ICC
<b>Host:</b>	Mouse
<b>Recommended dilutions:</b>	WB: 0.5-5 $\mu$ g/ml, IHC: 5-30 $\mu$ g/ml, IF/ICC: 5-30 $\mu$ g/ml. Optimal dilutions/concentrations should be determined by the end user.
<b>Conjugation:</b>	Unconjugated
<b>Immunogen:</b>	Ser27-Gln203
<b>Isotype:</b>	IgG <sub>2b</sub> Kappa
<b>Form:</b>	Liquid
<b>Purification:</b>	Purified by Protein A and Protein G affinity chromatography.
<b>Storage:</b>	Aliquot and store at -20°C. Avoid repeated freeze/thaw cycles.
<b>UniProt Primary AC:</b>	Q90873 ( <a href="#">UniProt</a> , <a href="#">ExPASy</a> )
<b>KEGG:</b>	gga:554219
<b>String:</b>	<a href="#">9031.ENSGALP00000038687</a>

# Datasheet

Version: 1.0.0

Revision date: 16 Oct 2024



**Buffer:** 0.01 M PBS, pH 7.4, containing 0.05% Proclin-300, 50% glycerol.

**Note:** This product is for research use only.

For Reference Only