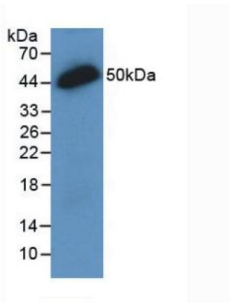
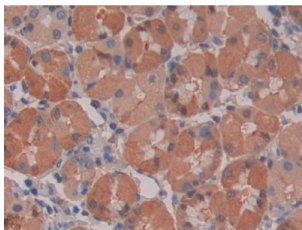


Interferon Lambda-2 (IFNL2) Antibody

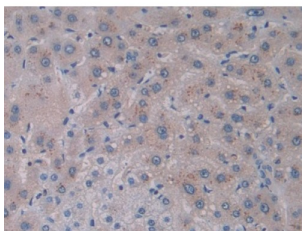
Catalogue No.: abx131935



Western blot analysis of recombinant Human IFNL2.



IHC-P analysis of Human Stomach cancer Tissue, with DAB staining.



IHC-P analysis of Human Stomach cancer Tissue, with DAB staining.

Interferon Lambda-2 Antibody is a Mouse Monoclonal against Interferon Lambda-2.

Target: Interferon Lambda-2 (IFNL2)

Clonality: Monoclonal

Reactivity: Human

Tested Applications: WB, IHC, IF/ICC

Host: Mouse

Recommended dilutions: WB: 0.01-5 µg/ml, IHC: 5-30 µg/ml, IF/ICC: 5-30 µg/ml. Optimal dilutions/concentrations should be determined by the end user.

Conjugation: Unconjugated

Datasheet

Version: 2.0.0
Revision date: 11 Mar 2025



Immunogen:	Val26-Val200
Isotype:	IgG _{2b} Kappa
Form:	Liquid
Purification:	Purified by Protein A and Protein G affinity chromatography.
Storage:	Aliquot and store at -20°C. Avoid repeated freeze/thaw cycles.
UniProt Primary AC:	Q8IZJ0 (UniProt , ExPASy)
KEGG:	hsa:282616
String:	9606.ENSP00000333639
Buffer:	0.01 M PBS, pH 7.4, containing 0.05% Proclin-300, 50% glycerol.
Note:	THIS PRODUCT IS FOR RESEARCH USE ONLY. NOT FOR USE IN DIAGNOSTIC, THERAPEUTIC OR COSMETIC PROCEDURES. NOT FOR HUMAN OR ANIMAL CONSUMPTION.

For Reference Only