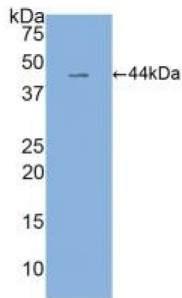
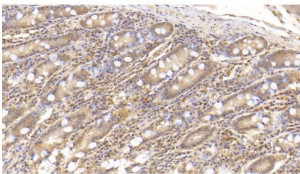


Interleukin 6 (IL6) Antibody

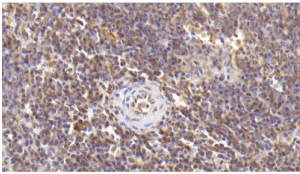
Catalogue No.: abx131986



Western blot analysis of recombinant Human IL6.



IHC-P analysis of Human Small Intestine Tissue, with DAB staining, using Mouse Anti-Human IL6 Antibody (20 µg/ml) and HRP-conjugated Goat Anti-Mouse antibody ([abx400001](#), 2 µg/ml).



IHC-P analysis of Human Spleen Tissue, with DAB staining, using Mouse Anti-Human IL6 Antibody (20 µg/ml) and HRP-conjugated Goat Anti-Mouse antibody ([abx400001](#), 2 µg/ml).

Interleukin 6 Antibody is a Mouse Monoclonal against Interleukin 6.

Target: Interleukin 6 (IL6)

Clonality: Monoclonal

Reactivity: Human

Tested Applications: WB, IHC, IF/ICC

Host: Mouse

Recommended dilutions: WB: 0.01-5 µg/ml, IHC: 5-30 µg/ml, IF/ICC: 5-30 µg/ml. Optimal dilutions/concentrations should be determined by the end user.

Conjugation: Unconjugated

Datasheet

Version: 2.0.0
Revision date: 14 Jan 2025



Immunogen:	abx652070 - Recombinant IL6 (Pro29-Met212) expressed in E. coli
Isotype:	IgG _{2b} Kappa
Form:	Liquid
Purification:	Purified by Protein A and Protein G affinity chromatography.
Storage:	Aliquot and store at -20°C. Avoid repeated freeze/thaw cycles.
UniProt Primary AC:	P05231 (UniProt , ExPASy)
KEGG:	hsa:3569
String:	9606.ENSP00000385675
Buffer:	0.01 M PBS, pH 7.4, containing 0.05% Proclin-300, 50% glycerol.
Note:	This product is for research use only.

For Reference Only