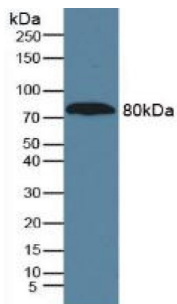
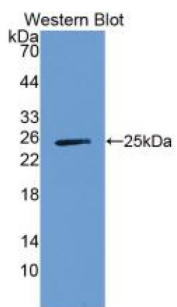


Alpha-1-B Glycoprotein (A1BG) Antibody

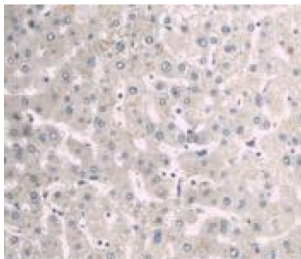
Catalogue No.: abx132123



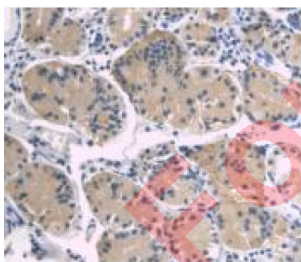
Western blot analysis of Human Serum.



Western blot analysis of recombinant Human a1BG.



IHC-P analysis of Human Liver Tissue, with DAB staining.



IHC-P analysis of Human Stomach Tissue, with DAB staining.

Alpha-1-B-Glycoprotein Antibody is a Mouse Monoclonal against Alpha-1-B-Glycoprotein.

Target: Alpha-1-B Glycoprotein (A1BG)

Clonality: Monoclonal

Reactivity: Human

Datasheet

Version: 3.0.0
Revision date: 12 Mar 2025



Tested Applications:	WB, IHC, IF/ICC
Host:	Mouse
Recommended dilutions:	WB: 0.01-5 µg/ml, IHC: 5-30 µg/ml, IF/ICC: 5-30 µg/ml. Optimal dilutions/concentrations should be determined by the end user.
Conjugation:	Unconjugated
Immunogen:	Ala22-Ala206
Isotype:	IgG, Kappa
Form:	Liquid
Purification:	Purified by Protein A and Protein G affinity chromatography.
Storage:	Aliquot and store at -20°C. Avoid repeated freeze/thaw cycles.
UniProt Primary AC:	P04217 (UniProt , ExPASy)
KEGG:	hsa:1
String:	9606.ENSP00000263100
Buffer:	0.01 M PBS, pH 7.4, containing 0.05% Proclin-300, 50% glycerol.
Note:	THIS PRODUCT IS FOR RESEARCH USE ONLY. NOT FOR USE IN DIAGNOSTIC, THERAPEUTIC OR COSMETIC PROCEDURES. NOT FOR HUMAN OR ANIMAL CONSUMPTION.

For Reference Only