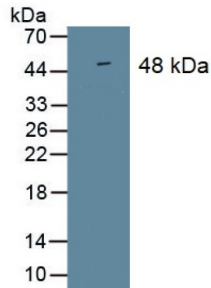


Immunoglobulin Superfamily Containing Leucine Rich Repeat Protein (ISLR) Antibody

Catalogue No.: abx132125



Western blot analysis of recombinant Human ISLR.

Immunoglobulin Superfamily Containing Leucine Rich Repeat Protein Antibody is a Mouse Monoclonal against Immunoglobulin Superfamily Containing Leucine Rich Repeat Protein.

Target:	Immunoglobulin Superfamily Containing Leucine Rich Repeat Protein (ISLR)
Clonality:	Monoclonal
Clone:	S448
Reactivity:	Human
Tested Applications:	WB, IHC, IF/ICC
Host:	Mouse
Recommended dilutions:	WB: 0.01-2 µg/ml, IHC: 5-20 µg/ml, IF/ICC: 5-20 µg/ml. Optimal dilutions/concentrations should be determined by the end user.
Conjugation:	Unconjugated
Immunogen:	abx167981 - Recombinant ISLR (Cys19-Phe428) expressed in E. coli
Isotype:	IgG ₁ Kappa
Form:	Liquid
Purification:	Purified by Protein A and Protein G affinity chromatography.
Storage:	Aliquot and store at -20°C. Avoid repeated freeze/thaw cycles.
UniProt Primary AC:	O14498 (UniProt , ExpASY)

Datasheet

Version: 5.0.0
Revision date: 12 Mar 2025



KEGG: hsa:3671

String: [9606.ENSP00000249842](#)

Buffer: 0.01 M PBS, pH 7.4, containing 0.05% Proclin-300, 50% glycerol.

Note: THIS PRODUCT IS FOR RESEARCH USE ONLY. NOT FOR USE IN DIAGNOSTIC, THERAPEUTIC OR COSMETIC PROCEDURES. NOT FOR HUMAN OR ANIMAL CONSUMPTION.

For Reference Only