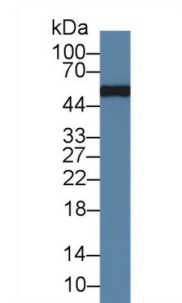
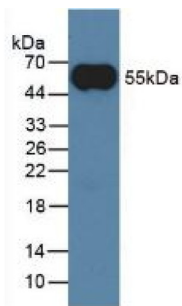


Immunoglobulin G (IgG) Antibody

Catalogue No.: abx132131



Western blot analysis of Rabbit Serum, using Rabbit IgG Antibody (1 µg/ml) and HRP-conjugated Goat Anti-Mouse antibody ([abx400001](#), 0.2 µg/ml).



Western blot analysis of Rabbit Serum.

Immunoglobulin G Antibody is a Mouse Monoclonal against Immunoglobulin G.

Target:	Immunoglobulin G (IgG)
Clonality:	Monoclonal
Reactivity:	Rabbit
Tested Applications:	WB, IHC, IF/ICC
Host:	Mouse
Recommended dilutions:	WB: 0.5-2 µg/ml, IHC: 5-20 µg/ml, IF/ICC: 5-20 µg/ml. Optimal dilutions/concentrations should be determined by the end user.
Conjugation:	Unconjugated
Isotype:	IgG _{2b} Kappa
Form:	Liquid
Purification:	Purified by Protein A and Protein G affinity chromatography.
Storage:	Aliquot and store at -20°C. Avoid repeated freeze/thaw cycles.

Datasheet

Version: 2.0.0

Revision date: 25 Nov 2024



Buffer: 0.01 M PBS, pH 7.4, containing 0.05% Proclin-300, 50% glycerol.

Note: This product is for research use only.

For Reference Only