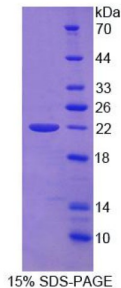


# Human ADAM Metallopeptidase With Thrombospondin Type 1 Motif 13 / vWF<sub>CP</sub> (ADAMTS13) Protein

Catalogue No.: abx168673

SDS-PAGE analysis of Human vWF<sub>CP</sub> Protein.

Human vWF<sub>CP</sub> Protein is a recombinant Human protein produced in a Prokaryotic expression system (E. coli).

|                             |  |
|-----------------------------|--|
| <b>Target:</b>              | ADAM Metallopeptidase With Thrombospondin Type 1 Motif 13 / vWF <sub>CP</sub> (ADAMTS13)   |
| <b>Origin:</b>              | Human  |
| <b>Expression:</b>          | Recombinant  |
| <b>Tested Applications:</b> | WB, SDS-PAGE   |
| <b>Host:</b>                | E. coli  |
| <b>Conjugation:</b>         | Unconjugated   |
| <b>Form:</b>                | Lyophilized  |
| <b>Purity:</b>              | > 97%  |
| <b>Reconstitution:</b>      | To keep the original salt concentration, we recommend reconstituting to the original concentration prior to lyophilization (see Concentration) in ddH <sub>2</sub> O. If a lower concentration is required, dilute in PBS, pH 7.4. If a higher concentration is required, the product can be reconstituted directly in PBS, pH 7.4, though please note that this will change the overall salt concentration. The stock concentration should be between 0.1-1.0 mg/ml. Do not vortex. |
| <b>Storage:</b>             | Store at 2-8 °C for up to one month. Store at -80 °C for up to one year. Avoid repeated freeze/thaw cycles.  |
| <b>UniProt Primary AC:</b>  | Q76LX8 ( <a href="#">UniProt</a> , <a href="#">ExpASY</a> )  |
| <b>KEGG:</b>                | hsa:11093  |

# Datasheet

Version: 2.0.0

Revision date: 22 Nov 2024



**String:** [9606.ENSF00000360997](#)

**Molecular Weight:** Calculated MW: 22.3 kDa

**Sequence Fragment:** Pro682-Cys859

**Tag:** N-terminal His tag

**Buffer:** Prior to lyophilization: PBS, pH 7.4, containing 0.01% Sarcosyl, 1 mM DTT, 5% Trehalose and Proclin-300.

**Activity:** Not tested

**Concentration:** Prior to lyophilization: 200 µg/ml

**Note:** This product is for research use only.  
Not for human consumption, cosmetic, therapeutic or diagnostic use.

For Reference Only