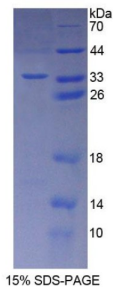


Mouse B-Cell CLL/Lymphoma 10 (Bcl10) Protein

Catalogue No.: abx168901



SDS-PAGE analysis of Mouse Bcl10 Protein.

Mouse Bcl10 Protein is a recombinant Mouse protein produced in a Prokaryotic expression system (*E. coli*).

Target: B-Cell CLL/Lymphoma 10 (Bcl10)

Origin: Mouse

Expression: Recombinant

Tested Applications: WB, SDS-PAGE

Host: *E. coli*

Conjugation: Unconjugated

Form: Lyophilized

Purity: > 90%

Reconstitution: To keep the original salt concentration, we recommend reconstituting to the original concentration prior to lyophilization (see Concentration) in ddH₂O. If a lower concentration is required, dilute in PBS, pH 7.4. If a higher concentration is required, the product can be reconstituted directly in PBS, pH 7.4, though please note that this will change the overall salt concentration. The stock concentration should be between 0.1-1.0 mg/ml. Do not vortex.

Storage: Store at 2-8 °C for up to one month. Store at -80 °C for up to one year. Avoid repeated freeze/thaw cycles.

UniProt Primary AC: Q9Z0H7 ([UniProt](#), [ExpASY](#))

String: [10090.ENSMUSP00000029842](#)

Molecular Weight: Calculated MW: 29.6 kDa

Datasheet

Version: 2.0.0

Revision date: 26 Mar 2025



Sequence Fragment: Met1-Gln233

Tag: N-terminal His tag

Buffer: Prior to lyophilization: PBS, pH 7.4, containing 0.01% Sarcosyl, 1 mM DTT, 5% Trehalose and Proclin-300.

Activity: Not tested

Concentration: Prior to lyophilization: 200 µg/ml

Note: THIS PRODUCT IS FOR RESEARCH USE ONLY. NOT FOR USE IN DIAGNOSTIC, THERAPEUTIC OR COSMETIC PROCEDURES. NOT FOR HUMAN OR ANIMAL CONSUMPTION.

For Reference Only