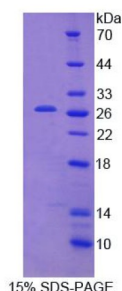


## Mouse Calcium Modulating Ligand (CAMLG) Protein

Catalogue No.: abx168917



SDS-PAGE analysis of Mouse CAMLG Protein.

Mouse CAMLG Protein is a recombinant Mouse protein produced in a Prokaryotic expression system (E. coli).

**Target:** Calcium Modulating Ligand (CAMLG)

**Origin:** Mouse

**Expression:** Recombinant

**Tested Applications:** WB, SDS-PAGE

**Host:** E. coli

**Conjugation:** Unconjugated

**Form:** Lyophilized

**Purity:** > 95%

**Reconstitution:** To keep the original salt concentration, we recommend reconstituting to the original concentration prior to lyophilization (see Concentration) in ddH<sub>2</sub>O. If a lower concentration is required, dilute in PBS, pH 7.4. If a higher concentration is required, the product can be reconstituted directly in PBS, pH 7.4, though please note that this will change the overall salt concentration. The stock concentration should be between 0.1-1.0 mg/ml. Do not vortex.

**Storage:** Store at 2-8 °C for up to one month. Store at -80 °C for up to one year. Avoid repeated freeze/thaw cycles.

**UniProt Primary AC:** P49070 ([UniProt](#), [ExPASy](#))

**KEGG:** mmu:12328

**String:** [10090.ENSMUSP000000021963](https://string-db.org/10090.ENSMUSP000000021963)

# Datasheet

Version: 3.0.0

Revision date: 15 Apr 2025



**Molecular Weight:** Calculated MW: 24.1 kDa

**Sequence Fragment:** Met1-Arg187

**Tag:** N-terminal His tag

**Buffer:** Prior to lyophilization: PBS, pH 7.4, containing 0.01% Sarcosyl, 1 mM DTT, 5% Trehalose and Proclin-300.

**Activity:** Not tested

**Concentration:** Prior to lyophilization: 200 µg/ml

**Note:** THIS PRODUCT IS FOR RESEARCH USE ONLY. NOT FOR USE IN DIAGNOSTIC, THERAPEUTIC OR COSMETIC PROCEDURES. NOT FOR HUMAN OR ANIMAL CONSUMPTION.

For Reference Only