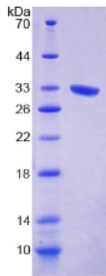


Human Exonuclease 1 (EXO1) Protein

Catalogue No.: abx168981



SDS-PAGE analysis of Human EXO1 Protein.

Human EXO1 Protein is a recombinant Human protein produced in a Prokaryotic expression system (E. coli).

Target:	Exonuclease 1 (EXO1)
Origin:	Human
Expression:	Recombinant
Tested Applications:	WB, SDS-PAGE
Host:	E. coli
Conjugation:	Unconjugated
Form:	Lyophilized
Purity:	> 95%
Reconstitution:	Reconstitute in ddH ₂ O to a concentration of 0.1-1.0 mg/ml. Do not vortex.
Storage:	Store at 2-8 °C for up to one month. Store at -80 °C for up to one year. Avoid repeated freeze/thaw cycles.
UniProt Primary AC:	Q9UQ84 (UniProt , ExPASy)
String:	9606.ENSP00000355506
Molecular Weight:	Calculated MW: 31.5 kDa Observed MW (SDS-PAGE): 32 kDa
Sequence Fragment:	Met1-Ile250
Tag:	N-terminal His tag

Datasheet

Version: 3.0.0

Revision date: 13 Mar 2025



Buffer: Prior to lyophilization: 100 mM NaHCO₃, 500 mM NaCl, pH 8.3, containing 1 mM EDTA, 1 mM DTT, 0.01% Sarcosyl, 5% Trehalose and Proclin-300.

Activity: Not tested

Concentration: Prior to lyophilization: 200 µg/ml

Note: THIS PRODUCT IS FOR RESEARCH USE ONLY. NOT FOR USE IN DIAGNOSTIC, THERAPEUTIC OR COSMETIC PROCEDURES. NOT FOR HUMAN OR ANIMAL CONSUMPTION.

For Reference Only