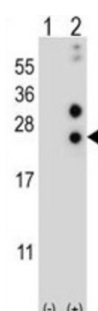


Alpha-S1-Casein (CSN1S1) Antibody

Catalogue No.: abx027086



Western blot analysis of 293 cell lysates (2 µg/lane) non-transfected (Lane 1) or transfected (Lane 2) with the CSN1S1 gene using Alpha-S1-Casein (CSN1S1) Antibody.

Alpha-S1-Casein (CSN1S1) Antibody is a rabbit polyclonal antibody for CSN1S1. CSN1S1 plays an important role in the capacity of milk to transport calcium phosphate. Casoxin D acts as opioid antagonist and has vasorelaxing activity mediated by bradykinin B1 receptors.

Target: Alpha-S1-Casein (CSN1S1)

Clonality: Polyclonal

Reactivity: Human

Tested Applications: ELISA, WB

Host: Rabbit

Recommended dilutions: WB: 1/1000. Optimal dilutions/concentrations should be determined by the end user.

Conjugation: Unconjugated

Immunogen: KLH-conjugated synthetic peptide between 36-65 amino acids from the Central region of human CSN1S1.

Isotype: IgG

Form: Liquid

Purification: Purified through a protein A column, followed by peptide affinity purification.

Storage: Aliquot and store at -20°C. Avoid repeated freeze/thaw cycles.

UniProt Primary AC: P47710 ([UniProt](#), [ExPASy](#))

KEGG: hsa:1446

Datasheet

Version: 4.0.0

Revision date: 17 Apr 2025



String: [9606.ENSPO0000246891](#)

Molecular Weight: Calculated MW: 21.7 kDa

Buffer: PBS containing 0.09% sodium azide.

Concentration: 0.5 mg/ml

Note: THIS PRODUCT IS FOR RESEARCH USE ONLY. NOT FOR USE IN DIAGNOSTIC, THERAPEUTIC OR COSMETIC PROCEDURES. NOT FOR HUMAN OR ANIMAL CONSUMPTION.

For Reference Only