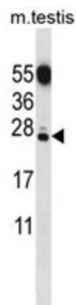


## CT011 Antibody

Catalogue No.: abx027097



CT011 Antibody is a Rabbit Polyclonal antibody against CT011.

<b>Target:</b>	CT011
<b>Clonality:</b>	Polyclonal
<b>Reactivity:</b>	Mouse
<b>Tested Applications:</b>	ELISA, WB
<b>Host:</b>	Rabbit
<b>Recommended dilutions:</b>	WB: 1/1000. Optimal dilutions/concentrations should be determined by the end user.
<b>Conjugation:</b>	Unconjugated
<b>Immunogen:</b>	KLH-conjugated synthetic peptide between 44-72 amino acids from the N-terminal region of human CT011.
<b>Isotype:</b>	IgG
<b>Form:</b>	Liquid
<b>Purification:</b>	Purified through a protein A column, followed by peptide affinity purification.
<b>Storage:</b>	Aliquot and store at -20°C. Avoid repeated freeze/thaw cycles.
<b>UniProt Primary AC:</b>	Q9NWU2 ( <a href="#">UniProt</a> , <a href="#">ExpASy</a> )
<b>Gene Symbol:</b>	GID8
<b>String:</b>	<a href="#">9606.ENSP00000266069</a>

# Datasheet

Version: 1.0.0  
Revision date: 27 Nov 2024



**Molecular Weight:** Calculated MW: 26.7 kDa

**Buffer:** PBS containing 0.09% sodium azide.

**Specificity:** Predicted to react with Cow and Chicken GID8.

**Note:** This product is for research use only.

For Reference Only