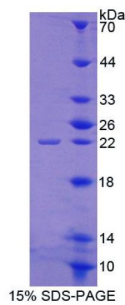


Datasheet

Version: 3.0.0
Revision date: 20 Mar 2025

Human ATP Binding Cassette Transporter E1 (ABCE1) Protein

Catalogue No.: abx650374



SDS-PAGE analysis of Human ABCE1 Protein.

Human ABCE1 Protein is a recombinant Human protein produced in a Prokaryotic expression system (E. coli).

Target:	ATP Binding Cassette Transporter E1 (ABCE1)
Origin:	Human
Expression:	Recombinant
Tested Applications:	WB, SDS-PAGE
Host:	E. coli
Conjugation:	Unconjugated
Form:	Lyophilized
Purity:	> 95%
Reconstitution:	Reconstitute in ddH ₂ O to a concentration of 0.1-1.0 mg/ml. Do not vortex.
Storage:	Store at 2-8 °C for up to one month. Store at -80 °C for up to one year. Avoid repeated freeze/thaw cycles.
UniProt Primary AC:	P61221 (UniProt , ExPASy)
KEGG:	hsa:6059
String:	9606.ENSP00000296577
Molecular Weight:	Calculated MW: 22.4 kDa Observed MW (SDS-PAGE): 22 kDa
Sequence Fragment:	Ile389-Asn556

Datasheet

Version: 3.0.0

Revision date: 20 Mar 2025



Tag:	N-terminal His tag
Buffer:	Prior to lyophilization: 100 mM NaHCO ₃ , 500 mM NaCl, pH 8.3, containing 1 mM EDTA, 1 mM DTT, 0.01% Sarcosyl, 5% Trehalose and Proclin-300.
Activity:	Not tested
Concentration:	Prior to lyophilization: 200 µg/ml
Note:	THIS PRODUCT IS FOR RESEARCH USE ONLY. NOT FOR USE IN DIAGNOSTIC, THERAPEUTIC OR COSMETIC PROCEDURES. NOT FOR HUMAN OR ANIMAL CONSUMPTION.

For Reference Only