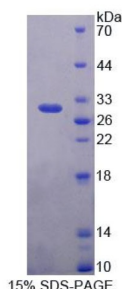


Human Phospholipase C Eta 2 (PLCh2) Protein

Catalogue No.: abx650502



SDS-PAGE analysis of Human PLCh2 Protein.

Human PLCh2 Protein is a recombinant Human protein produced in a Prokaryotic expression system (E. coli).

Target: Phospholipase C Eta 2 (PLCh2)

Origin: Human

Expression: Recombinant

Tested Applications: WB, SDS-PAGE

Host: E. coli

Conjugation: Unconjugated

Form: Lyophilized

Activity: Not tested

Purity: > 95%

Reconstitution: To keep the original salt concentration, we recommend reconstituting to the original concentration prior to lyophilization (see Concentration) in ddH₂O. If a lower concentration is required, dilute in PBS, pH 7.4. If a higher concentration is required, the product can be reconstituted directly in PBS, pH 7.4, though please note that this will change the overall salt concentration. The stock concentration should be between 0.1-1.0 mg/ml. Do not vortex.

Storage: Store at 2-8 °C for up to one month. Store at -80 °C for up to one year. Avoid repeated freeze/thaw cycles.

UniProt Primary AC: O75038 ([UniProt](#), [ExPASy](#))

KEGG: hsa:9651

Datasheet

Version: 2.0.0

Revision date: 24 Aug 2025



String: [9606.ENSPO0000367747](#)

Molecular Weight: Calculated MW: 33.2 kDa

Sequence Fragment: Met1-His257

Tag: N-terminal His tag

Buffer: Prior to lyophilization: PBS, pH 7.4, containing 0.01% Sarcosyl, 1 mM DTT, 5% Trehalose and Proclin-300.

Concentration: Prior to lyophilization: 200 µg/ml

Note: THIS PRODUCT IS FOR RESEARCH USE ONLY. NOT FOR USE IN DIAGNOSTIC, THERAPEUTIC OR COSMETIC PROCEDURES. NOT FOR HUMAN OR ANIMAL CONSUMPTION.

For Reference Only