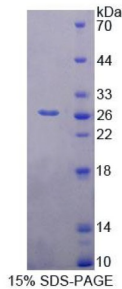


Rat Bcl2 Associated Athanogene 1 (BAG1) Protein

Catalogue No.: abx650652



SDS-PAGE analysis of Rat BAG1 Protein.

Rat BAG1 Protein is a recombinant Rat protein produced in a Prokaryotic expression system (E. coli).

| | |
|-----------------------------|--------------------------------------------------------------------------------------------------------------------------------------------------------------------------------------------------------------------------------------------------------------------------------------------------------------------------------------------------------------------------------------------------------------------------------------------------------------------------------------|
| Target: | Bcl2 Associated Athanogene 1 (BAG1) |
| Origin: | Rat |
| Expression: | Recombinant |
| Tested Applications: | WB, SDS-PAGE |
| Host: | E. coli |
| Conjugation: | Unconjugated |
| Form: | Lyophilized |
| Purity: | > 95% |
| Reconstitution: | To keep the original salt concentration, we recommend reconstituting to the original concentration prior to lyophilization (see Concentration) in ddH ₂ O. If a lower concentration is required, dilute in PBS, pH 7.4. If a higher concentration is required, the product can be reconstituted directly in PBS, pH 7.4, though please note that this will change the overall salt concentration. The stock concentration should be between 0.1-1.0 mg/ml. Do not vortex. |
| Storage: | Store at 2-8 °C for up to one month. Store at -80 °C for up to one year. Avoid repeated freeze/thaw cycles. |
| UniProt Primary AC: | B0K019 (UniProt , ExpASY) |
| KEGG: | rno:297994 |
| String: | 10116.ENSRNOP00000011455 |

Datasheet

Version: 2.0.0

Revision date: 03 Dec 2024



Molecular Weight: Calculated MW: 24.4 kDa

Sequence Fragment: Gly177-Glu358

Tag: N-terminal His tag

Buffer: Prior to lyophilization: PBS, pH 7.4, containing 0.01% Sarcosyl, 1 mM DTT, 5% Trehalose and Proclin-300.

Activity: Not tested

Concentration: Prior to lyophilization: 200 µg/ml

Note: This product is for research use only.
Not for human consumption, cosmetic, therapeutic or diagnostic use.

For Reference Only