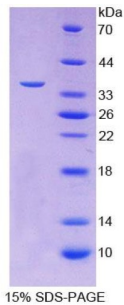


Human Follistatin Like Protein 1 (FSTL1) Protein

Catalogue No.: abx650753



SDS-PAGE analysis of Human FSTL1 Protein.

Human FSTL1 Protein is a recombinant Human protein produced in a Prokaryotic expression system (E. coli).

Target:	Follistatin Like Protein 1 (FSTL1)
Origin:	Human
Expression:	Recombinant
Tested Applications:	WB, SDS-PAGE
Host:	E. coli
Conjugation:	Unconjugated
Form:	Lyophilized
Purity:	> 90%
Reconstitution:	To keep the original salt concentration, we recommend reconstituting to the original concentration prior to lyophilization (see Concentration) in ddH ₂ O. If a lower concentration is required, dilute in PBS, pH 7.4. If a higher concentration is required, the product can be reconstituted directly in PBS, pH 7.4, though please note that this will change the overall salt concentration. The stock concentration should be between 0.1-1.0 mg/ml. Do not vortex.
Storage:	Store at 2-8 °C for up to one month. Store at -80 °C for up to one year. Avoid repeated freeze/thaw cycles.
UniProt Primary AC:	Q12841 (UniProt , ExPASy)
KEGG:	hsa:11167
String:	9606.ENSP00000295633

Datasheet

Version: 2.0.0

Revision date: 09 Nov 2024



Molecular Weight: Calculated MW: 36.4 kDa

Sequence Fragment: Glu21-Ile308

Tag: N-terminal His tag

Buffer: Prior to lyophilization: PBS, pH 7.4, containing 0.01% Sarcosyl, 1 mM DTT, 5% Trehalose and Proclin-300.

Activity: Not tested

Concentration: Prior to lyophilization: 200 µg/ml

Note: This product is for research use only.
Not for human consumption, cosmetic, therapeutic or diagnostic use.

For Reference Only