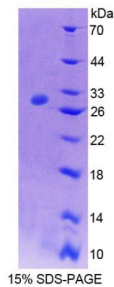


Rat ATPase, Na⁺/K⁺ Transporting Beta 4 Polypeptide (ATP1B4) Protein

Catalogue No.: abx650824



SDS-PAGE analysis of Rat ATP1b4 Protein.

Rat ATP1b4 Protein is a recombinant Rat protein produced in a Prokaryotic expression system (*E. coli*).

Target:	ATPase, Na ⁺ /K ⁺ Transporting Beta 4 Polypeptide (ATP1B4)
Origin:	Rat
Expression:	Recombinant
Tested Applications:	WB, SDS-PAGE
Host:	<i>E. coli</i>
Conjugation:	Unconjugated
Form:	Lyophilized
Purity:	> 95%
Reconstitution:	To keep the original salt concentration, we recommend reconstituting to the original concentration prior to lyophilization (see Concentration) in ddH ₂ O. If a lower concentration is required, dilute in PBS, pH 7.4. If a higher concentration is required, the product can be reconstituted directly in PBS, pH 7.4, though please note that this will change the overall salt concentration. The stock concentration should be between 0.1-1.0 mg/ml. Do not vortex.
Storage:	Store at 2-8 °C for up to one month. Store at -80 °C for up to one year. Avoid repeated freeze/thaw cycles.
UniProt Primary AC:	Q9R193 (UniProt , ExpASY)
String:	10116.ENSRNOP00000009329
Molecular Weight:	Calculated MW: 29.5 kDa

Datasheet

Version: 2.0.0

Revision date: 26 Mar 2025



Sequence Fragment: Met132-Thr356

Tag: N-terminal His tag

Buffer: Prior to lyophilization: PBS, pH 7.4, containing 0.01% Sarcosyl, 1 mM DTT, 5% Trehalose and Proclin-300.

Activity: Not tested

Concentration: Prior to lyophilization: 200 µg/ml

Note: THIS PRODUCT IS FOR RESEARCH USE ONLY. NOT FOR USE IN DIAGNOSTIC, THERAPEUTIC OR COSMETIC PROCEDURES. NOT FOR HUMAN OR ANIMAL CONSUMPTION.

For Reference Only