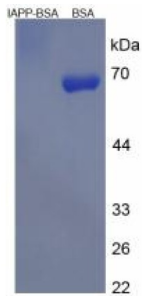
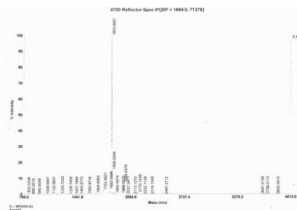


## Rat Islet Amyloid Polypeptide (IAPP) Peptide (BSA)

Catalogue No.: abx651117



SDS-PAGE analysis of Islet Amyloid Polypeptide Protein (BSA).



MS analysis of Islet Amyloid Polypeptide Protein (BSA).

Islet Amyloid Polypeptide Protein (BSA) is a Rat protein conjugated to BSA.

**Target:** Islet Amyloid Polypeptide (IAPP)

**Origin:** Rat

**Expression:** Synthetic

**Tested Applications:** WB, SDS-PAGE

**Conjugation:** BSA

**Form:** Lyophilized

**Purity:** > 90%

**Reconstitution:** To keep the original salt concentration, we recommend reconstituting to the original concentration prior to lyophilization (see Concentration) in ddH<sub>2</sub>O. If a lower concentration is required, dilute in PBS, pH 7.4. If a higher concentration is required, the product can be reconstituted directly in PBS, pH 7.4, though please note that this will change the overall salt concentration. The stock concentration should be between 0.1-1.0 mg/ml. Do not vortex.

**Storage:** Store at 2-8 °C for up to one month. Store at -80 °C for up to one year. Avoid repeated freeze/thaw cycles.

# Datasheet

Version: 1.0.0  
Revision date: 23 Feb 2025



- Buffer:** Prior to lyophilization: PBS, pH 7.4.
- Activity:** Not tested
- Concentration:** Prior to lyophilization: 200 µg/ml
- Note:** This product is for research use only.  
Not for human consumption, cosmetic, therapeutic or diagnostic use.

For Reference Only