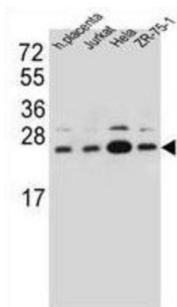
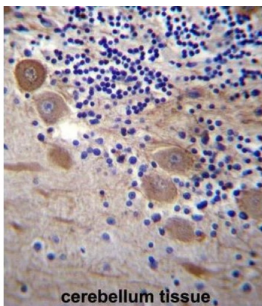
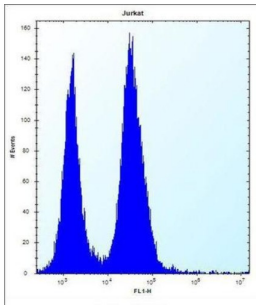


Translocon-Associated Protein Subunit Beta (SSR2) Antibody

Catalogue No.: abx027257



The signal sequence receptor (SSR) is a glycosylated endoplasmic reticulum (ER) membrane receptor associated with protein translocation across the ER membrane. The SSR consists of 2 subunits, a 34-kD glycoprotein (alpha-SSR or SSR1) and a 22-kD glycoprotein (beta-SSR or SSR2). The human beta-signal sequence receptor gene (SSR2) maps to chromosome bands 1q21-q23. [provided by RefSeq].

Target: Translocon-Associated Protein Subunit Beta (SSR2)

Clonality: Polyclonal

Reactivity: Human

Tested Applications: ELISA, WB, IHC, FCM

Host: Rabbit

Recommended dilutions: WB: 1/1000, IHC-P: 1/10 - 1/50, FCM: 1/10 - 1/50. Not tested in IHC-F. Optimal dilutions/concentrations should be determined by the end user.

Datasheet

Version: 3.0.0
Revision date: 06 Oct 2024



Conjugation:	Unconjugated
Immunogen:	KLH-conjugated synthetic peptide between 154-183 amino acids from the C-terminal region of human SSR2.
Isotype:	IgG
Form:	Liquid
Purification:	Purified through a protein A column, followed by peptide affinity purification.
Storage:	Aliquot and store at -20°C. Avoid repeated freeze/thaw cycles.
UniProt Primary AC:	P43308 (UniProt , ExPASy)
Gene Symbol:	SSR2
KEGG:	hsa:6746
String:	9606.ENSP00000295702
Molecular Weight:	Calculated MW: 20.1 kDa
Buffer:	PBS containing 0.09% sodium azide.
Specificity:	Predicted to react with Cow SSR2.
Note:	This product is for research use only.

For Reference Only