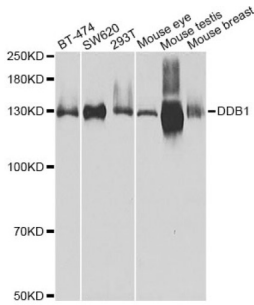
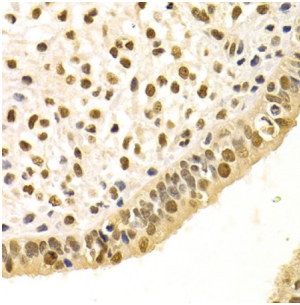


## DNA Damage-Binding Protein 1 (DDB1) Antibody

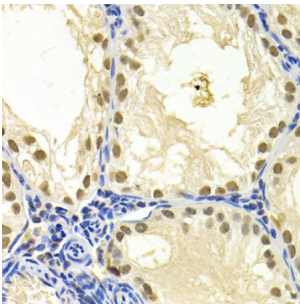
Catalogue No.: abx002127



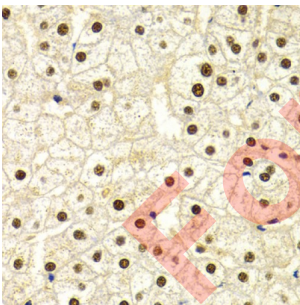
Western blot analysis of extracts of various cell lines, using DDB1 Antibody (abx002127) at 1/500 dilution.



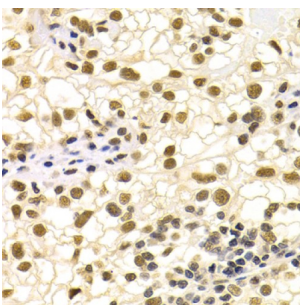
Immunohistochemistry of paraffin-embedded human uterine cancer using DDB1 Antibody (abx002127) at dilution of 1/200 (40x lens).



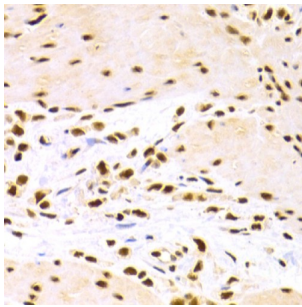
Immunohistochemistry of paraffin-embedded mouse testis using DDB1 Antibody (abx002127) at dilution of 1/200 (40x lens).



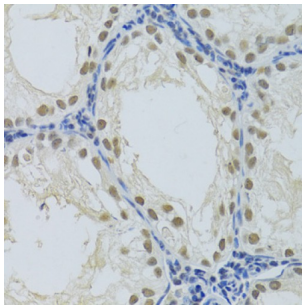
Immunohistochemistry of paraffin-embedded human liver injury using DDB1 Antibody (abx002127) at dilution of 1/200 (40x lens).



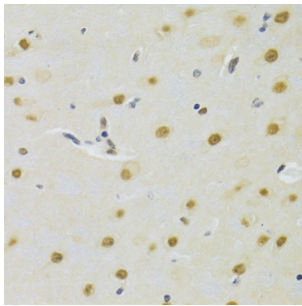
Immunohistochemistry of paraffin-embedded human kidney cancer using DDB1 Antibody (abx002127) at dilution of 1/200 (40x lens).



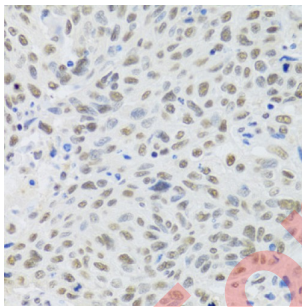
Immunohistochemistry of paraffin-embedded human gastric cancer using DDB1 Antibody (abx002127) at dilution of 1/200 (40x lens).



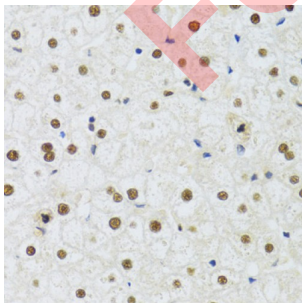
Immunohistochemistry of paraffin-embedded rat testis using DDB1 Antibody (abx002127) at dilution of 1/100 (40x lens).



Immunohistochemistry of paraffin-embedded rat brain using DDB1 Antibody (abx002127) at dilution of 1/100 (40x lens).

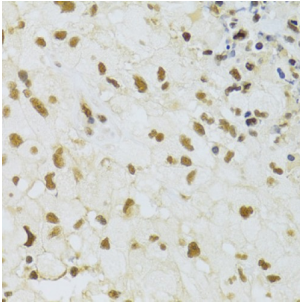


Immunohistochemistry of paraffin-embedded human lung cancer using DDB1 Antibody (abx002127) at dilution of 1/100 (40x lens).

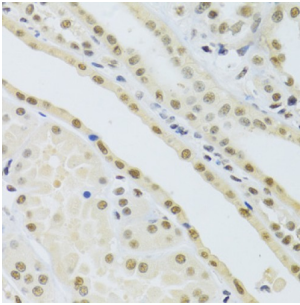


Immunohistochemistry of paraffin-embedded human liver using DDB1 Antibody (abx002127) at dilution of 1/100 (40x lens).

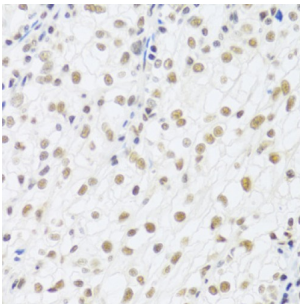
For Reference Only



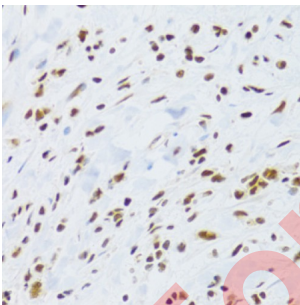
Immunohistochemistry of paraffin-embedded human brain cancer using DDB1 Antibody (abx002127) at dilution of 1/100 (40x lens).



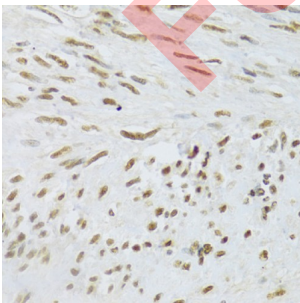
Immunohistochemistry of paraffin-embedded human kidney using DDB1 Antibody (abx002127) at dilution of 1/100 (40x lens).



Immunohistochemistry of paraffin-embedded human kidney cancer using DDB1 Antibody (abx002127) at dilution of 1/100 (40x lens).



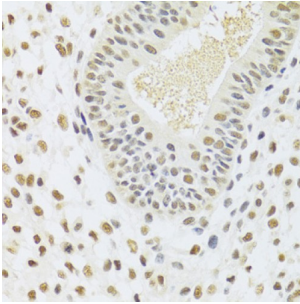
Immunohistochemistry of paraffin-embedded human gastric cancer using DDB1 Antibody (abx002127) at dilution of 1/100 (40x lens).



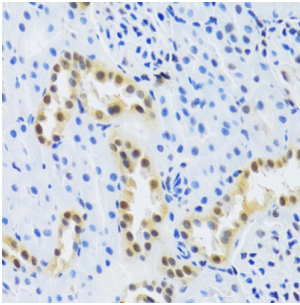
Immunohistochemistry of paraffin-embedded human uterus using DDB1 Antibody (abx002127) at dilution of 1/100 (40x lens).

# Datasheet

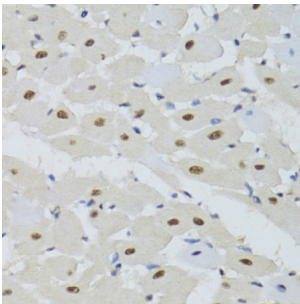
Version: 2.0.0  
Revision date: 03 Dec 2024



Immunohistochemistry of paraffin-embedded human uterine cancer using DDB1 Antibody (abx002127) at dilution of 1/100 (40x lens).



Immunohistochemistry of paraffin-embedded mouse kidney using DDB1 Antibody (abx002127) at dilution of 1/100 (40x lens).



Immunohistochemistry of paraffin-embedded mouse heart using DDB1 Antibody (abx002127) at dilution of 1/100 (40x lens).

DDB1 Antibody is a Rabbit Polyclonal antibody against DDB1. The protein encoded by this gene is the large subunit (p127) of the heterodimeric DNA damage-binding (DDB) complex while another protein (p48) forms the small subunit. This protein complex functions in nucleotide-excision repair and binds to DNA following UV damage. Defective activity of this complex causes the repair defect in patients with xeroderma pigmentosum complementation group E (XPE) - an autosomal recessive disorder characterized by photosensitivity and early onset of carcinomas. However, it remains for mutation analysis to demonstrate whether the defect in XPE patients is in this gene or the gene encoding the small subunit. In addition, Best vitelliform macular dystrophy is mapped to the same region as this gene on 11q, but no sequence alternations of this gene are demonstrated in Best disease patients. The protein encoded by this gene also functions as an adaptor molecule for the cullin 4 (CUL4) ubiquitin E3 ligase complex by facilitating the binding of substrates to this complex and the ubiquitination of proteins.

**Target:** DNA Damage-Binding Protein 1 (DDB1)

**Clonality:** Polyclonal

**Reactivity:** Human, Mouse, Rat

**Tested Applications:** WB, IHC, IF/ICC

**Host:** Rabbit

# Datasheet

Version: 2.0.0  
Revision date: 03 Dec 2024



**Recommended dilutions:** WB: 1/500 - 1/1000, IHC-P: 1/50 - 1/100, IF/ICC: 1/50 - 1/100. Not tested in IHC-F. Optimal dilutions/concentrations should be determined by the end user.

**Conjugation:** Unconjugated

**Immunogen:** A synthetic peptide corresponding to a sequence within amino acids 741-1140 of human DDB1.

**Isotype:** IgG

**Form:** Liquid

**Purification:** Purified by affinity chromatography.

**Storage:** Aliquot and store at -20°C. Avoid repeated freeze/thaw cycles.

**UniProt Primary AC:** Q16531 ([UniProt](#), [ExPASy](#))

**Gene Symbol:** DDB1

**GeneID:** [1642](#)

**NCBI Accession:** NP\_001914.3

**KEGG:** hsa:1642

**String:** [9606.ENSP00000301764](#)

**Molecular Weight:** Calculated MW: 127 kDa  
Observed MW: 127 kDa

**Buffer:** PBS, pH 7.3, containing 0.01% thimerosal, 50% glycerol.

**Concentration:** > 0.2 mg/ml

**Note:** This product is for research use only.