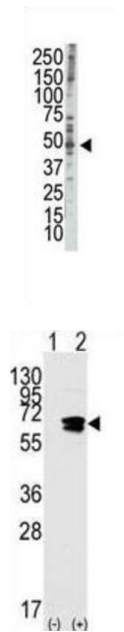
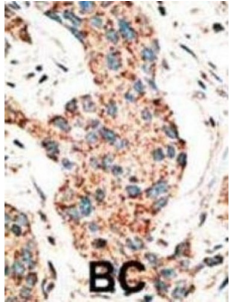


## RAD9 (BH3 Domain Specific) Antibody

Catalogue No.: abx027268



This gene product is highly similar to *Schizosaccharomyces pombe rad9*, a cell cycle checkpoint protein required for cell cycle arrest and DNA damage repair in response to DNA damage. This protein is found to possess 3' to 5' exonuclease activity, which may contribute to its role in sensing and repairing DNA damage. It forms a checkpoint protein complex with RAD1 and HUS1. This complex is recruited by checkpoint protein RAD17 to the sites of DNA damage, which is thought to be important for triggering the checkpoint-signaling cascade. Use of alternative polyA sites has been noted for this gene.

**Target:** RAD9 (BH3 Domain Specific)

**Clonality:** Polyclonal

**Reactivity:** Human

**Tested Applications:** ELISA, WB, IHC

**Host:** Rabbit

# Datasheet

Version: 2.0.0  
Revision date: 16 Nov 2024



**Recommended dilutions:** WB: 1/4000, IHC-P: 1/50 - 1/100. Not tested in IHC-F. Optimal dilutions/concentrations should be determined by the end user.

**Conjugation:** Unconjugated

**Immunogen:** KLH-conjugated synthetic peptide between 1-30 amino acids from human RAD9.

**Isotype:** IgG

**Form:** Liquid

**Purification:** Purified through a protein G column, eluted with high and low pH buffers and neutralized immediately, followed by dialysis against PBS.

**Storage:** Aliquot and store at -20°C. Avoid repeated freeze/thaw cycles.

**UniProt Primary AC:** Q99638 ([UniProt](#), [ExPASy](#))

**Molecular Weight:** Calculated MW: 42.5 kDa

**Buffer:** PBS containing 0.09% sodium azide.

**Specificity:** Predicted to react with Monkey RAD9A.

**Note:** This product is for research use only.

For Reference Only