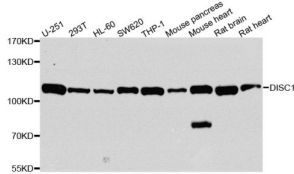
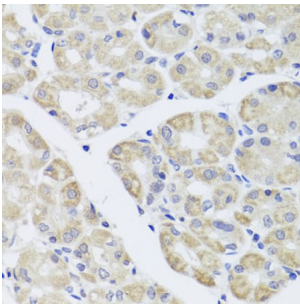


Disrupted In Schizophrenia 1 Protein (DISC1) Antibody

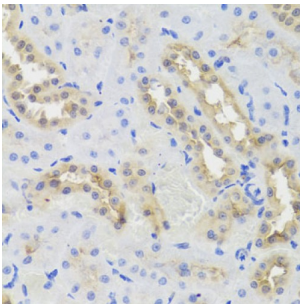
Catalogue No.: abx002129



Western blot analysis of extracts of various cell lines, using DISC1 antibody (abx002129) at 1/1000 dilution.



Immunohistochemistry of paraffin-embedded human stomach using DISC1 antibody (abx002129) at dilution of 1/100 (40x lens).



Immunohistochemistry of paraffin-embedded rat kidney using DISC1 antibody (abx002129) at dilution of 1/100 (40x lens).

DISC1 Antibody is a Rabbit Polyclonal antibody against DISC1. This gene encodes a protein with multiple coiled coil motifs which is located in the nucleus, cytoplasm and mitochondria. The protein is involved in neurite outgrowth and cortical development through its interaction with other proteins. This gene is disrupted in a t(1;11)(q42.1;q14.3) translocation which segregates with schizophrenia and related psychiatric disorders in a large Scottish family. Alternate transcriptional splice variants, encoding different isoforms, have been characterized.

Target: Disrupted In Schizophrenia 1 Protein (DISC1)

Clonality: Polyclonal

Reactivity: Human, Mouse, Rat

Tested Applications: WB

Host: Rabbit

Datasheet

Version: 2.0.0
Revision date: 03 Dec 2024



Recommended dilutions: WB: 1/500 - 1/2000. Optimal dilutions/concentrations should be determined by the end user.

Conjugation:	Unconjugated
Immunogen:	Recombinant fusion protein containing a sequence corresponding to amino acids 1-200 of human DISC1.
Isotype:	IgG
Form:	Liquid
Purification:	Purified by affinity chromatography.
Storage:	Aliquot and store at -20°C. Avoid repeated freeze/thaw cycles.
UniProt Primary AC:	Q9NRI5 (UniProt , ExPASy)
Gene Symbol:	DISC1
GeneID:	27185
NCBI Accession:	NP_001158009.1
String:	9606.ENSP00000355593
Molecular Weight:	Calculated MW: 94 kDa Observed MW: 105 kDa
Buffer:	PBS, pH 7.3, containing 0.02% sodium azide, 50% glycerol.
Concentration:	> 0.2 mg/ml
Note:	This product is for research use only.