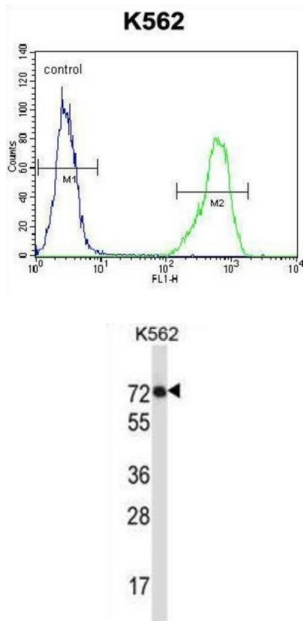


Interleukin 1 Receptor Like Protein 2 (IL1RL2) Antibody

Catalogue No.: abx027375



The protein encoded by this gene is a member of the interleukin 1 receptor family. An experiment with transient gene expression demonstrated that this receptor was incapable of binding to interleukin 1 alpha and interleukin 1 beta with high affinity. This gene and four other interleukin 1 receptor family genes, including interleukin 1 receptor, type I (IL1R1), interleukin 1 receptor, type II (IL1R2), interleukin 1 receptor-like 1 (IL1RL1), and interleukin 18 receptor 1 (IL18R1), form a cytokine receptor gene cluster in a region mapped to chromosome 2q12. [provided by RefSeq].

Target: Interleukin 1 Receptor Like Protein 2 (IL1RL2)

Clonality: Polyclonal

Reactivity: Human

Tested Applications: ELISA, WB, FCM

Host: Rabbit

Recommended dilutions: WB: 1/8000, FCM: 1/25. Optimal dilutions/concentrations should be determined by the end user.

Conjugation: Unconjugated

Immunogen: KLH-conjugated synthetic peptide between 257-286 amino acids from the Central region of human IL1RL2.

Isotype: IgG

Datasheet

Version: 5.0.0
Revision date: 12 Mar 2025



Form:	Liquid
Purification:	Purified through a protein A column, followed by peptide affinity purification.
Storage:	Aliquot and store at -20°C. Avoid repeated freeze/thaw cycles.
UniProt Primary AC:	Q9HB29 (UniProt , ExpASY)
Gene Symbol:	IL1RL2
String:	9606.ENSP00000264257
Molecular Weight:	Calculated MW: 65.4 kDa
Buffer:	PBS containing 0.09% sodium azide.
Note:	THIS PRODUCT IS FOR RESEARCH USE ONLY. NOT FOR USE IN DIAGNOSTIC, THERAPEUTIC OR COSMETIC PROCEDURES. NOT FOR HUMAN OR ANIMAL CONSUMPTION.

For Reference Only