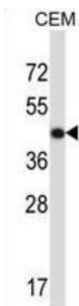
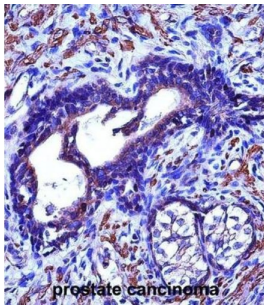


Actin, Gamma 2, Smooth Muscle (ACTG2) Antibody

Catalogue No.: abx027450



Actins are highly conserved proteins that are involved in various types of cell motility, and maintenance of the cytoskeleton. In vertebrates, three main groups of actin isoforms, alpha, beta and gamma have been identified. The alpha actins are found in muscle tissues and are a major constituent of the contractile apparatus. The beta and gamma actins co-exist in most cell types as components of the cytoskeleton, and as mediators of internal cell motility. Actin, gamma 2, encoded by this gene, is a smooth muscle actin found in enteric tissues.

Target: Actin, Gamma 2, Smooth Muscle (ACTG2)

Clonality: Polyclonal

Reactivity: Human

Tested Applications: ELISA, WB, IHC

Host: Rabbit

Recommended dilutions: WB: 1/1000, IHC-P: 1/10 - 1/50. Not tested in IHC-F. Optimal dilutions/concentrations should be determined by the end user.

Conjugation: Unconjugated

Immunogen: KLH-conjugated synthetic peptide between 343-371 amino acids from the C-terminal region of human ACTG2.

Isotype: IgG

Datasheet

Version: 2.0.0
Revision date: 03 Dec 2024



Form:	Liquid
Purification:	Purified through a protein A column, followed by peptide affinity purification.
Storage:	Aliquot and store at -20°C. Avoid repeated freeze/thaw cycles.
UniProt Primary AC:	P63267 (UniProt , ExpASY)
KEGG:	hsa:72
String:	9606.ENSP00000386857
Molecular Weight:	Calculated MW: 41.9 kDa
Buffer:	PBS containing 0.09% sodium azide.
Specificity:	Predicted to react with Mouse, Rat, Cow and Chicken ACTG2.
Note:	This product is for research use only.

For Reference Only