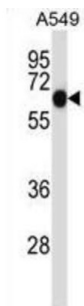
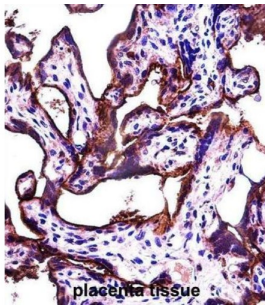


Alkaline Phosphatase, Placental Like Protein 2 (ALPPL2) Antibody

Catalogue No.: abx027462



There are at least four distinct but related alkaline phosphatases: intestinal, placental, placental-like, and liver/bone/kidney (tissue non-specific). The product of this gene is a membrane bound glycosylated enzyme, localized to testis, thymus and certain germ cell tumors, that is closely related to both the placental and intestinal forms of alkaline phosphatase.

Target:	Alkaline Phosphatase, Placental Like Protein 2 (ALPPL2)
Clonality:	Polyclonal
Reactivity:	Human
Tested Applications:	ELISA, WB, IHC
Host:	Rabbit
Recommended dilutions:	WB: 1/1000, IHC-P: 1/10 - 1/50. Not tested in IHC-F. Optimal dilutions/concentrations should be determined by the end user.
Conjugation:	Unconjugated
Immunogen:	KLH-conjugated synthetic peptide between 58-86 amino acids from the N-terminal region of human ALPPL2.
Isotype:	IgG
Form:	Liquid

Datasheet

Version: 2.0.0
Revision date: 04 Oct 2024



Purification:	Purified through a protein A column, followed by peptide affinity purification.
Storage:	Aliquot and store at -20°C. Avoid repeated freeze/thaw cycles.
UniProt Primary AC:	P10696 (UniProt , ExPASy)
Gene Symbol:	ALPG
KEGG:	hsa:251
String:	9606.ENSP00000295453
Molecular Weight:	Calculated MW: 57.4 kDa
Buffer:	PBS containing 0.09% sodium azide.
Note:	This product is for research use only.

For Reference Only