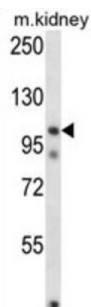


Follistatin-Related Protein 5 (FSTL5) Antibody

Catalogue No.: abx027464



WB analysis of mouse kidney tissue lysates.

The function of this protein remains unknown.

| | |
|-------------------------------|---|
| Target: | Follistatin-Related Protein 5 (FSTL5) |
| Clonality: | Polyclonal |
| Reactivity: | Mouse |
| Tested Applications: | ELISA, WB |
| Host: | Rabbit |
| Recommended dilutions: | WB: 1/1000. Optimal dilutions/concentrations should be determined by the end user. |
| Conjugation: | Unconjugated |
| Immunogen: | KLH-conjugated synthetic peptide between 20-48 amino acids from the N-terminal region of human FSTL5. |
| Isotype: | IgG |
| Form: | Liquid |
| Purification: | Purified through a protein A column, followed by peptide affinity purification. |
| Storage: | Aliquot and store at -20°C. Avoid repeated freeze/thaw cycles. |
| UniProt Primary AC: | Q8N475 (UniProt , ExPASy) |
| Gene Symbol: | FSTL5 |
| GeneID: | 56884 |

Datasheet

Version: 4.0.0
Revision date: 13 Mar 2025



KEGG: hsa:56884

String: [9606.ENSP00000305334](#)

Molecular Weight: Calculated MW: 95.8 kDa

Buffer: PBS containing 0.09% sodium azide.

Concentration: 0.50 mg/ml

Note: THIS PRODUCT IS FOR RESEARCH USE ONLY. NOT FOR USE IN DIAGNOSTIC, THERAPEUTIC OR COSMETIC PROCEDURES. NOT FOR HUMAN OR ANIMAL CONSUMPTION.

For Reference Only