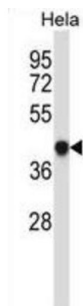
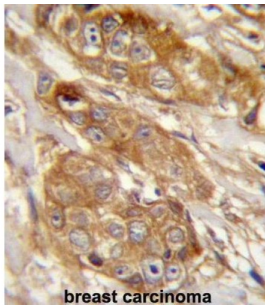


Protein Lifeguard 1 (GRINA) Antibody

Catalogue No.: abx027466



The function of this protein remains unknown.

Target:	Protein Lifeguard 1 (GRINA)
Clonality:	Polyclonal
Reactivity:	Human
Tested Applications:	ELISA, WB, IHC
Host:	Rabbit
Recommended dilutions:	WB: 1/1000, IHC-P: 1/10 - 1/50. Not tested in IHC-F. Optimal dilutions/concentrations should be determined by the end user.
Conjugation:	Unconjugated
Immunogen:	KLH-conjugated synthetic peptide between 131-158 amino acids from the Central region of human GRINA.
Isotype:	IgG
Form:	Liquid
Purification:	Purified through a protein A column, followed by peptide affinity purification.

Datasheet

Version: 3.0.0
Revision date: 14 Nov 2024



Storage:	Aliquot and store at -20°C. Avoid repeated freeze/thaw cycles.
UniProt Primary AC:	Q7Z429 (UniProt , ExpASY)
Gene Symbol:	GRINA
KEGG:	hsa:2907
String:	9606.ENSP00000314380
Molecular Weight:	Calculated MW: 41.2 kDa
Buffer:	PBS containing 0.09% sodium azide.
Specificity:	Predicted to react with Cow GRINA.
Note:	This product is for research use only.

For Reference Only