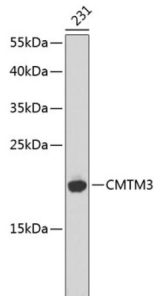


CKLF Like MARVEL Transmembrane Domain Containing 3 (CMTM3) Antibody

Catalogue No.: abx002147



Western blot analysis of lysates from 231 cells, using CMTM3 Antibody. Secondary antibody: HRP-conjugated Goat anti-Rabbit IgG (H+L) at 1/10000 dilution. Lysates/proteins: 25 µg per lane. Blocking buffer: 3% nonfat dry milk in TBST.

CMTM3 Antibody is a Rabbit Polyclonal antibody against CMTM3. This gene belongs to the chemokine-like factor gene superfamily, a novel family that is similar to the chemokine and the transmembrane 4 superfamilies of signaling molecules. This gene is one of several chemokine-like factor genes located in a cluster on chromosome 16. Alternatively spliced transcript variants containing different 5' UTRs, but encoding the same protein, have been identified.

Target:	CKLF Like MARVEL Transmembrane Domain Containing 3 (CMTM3)
Clonality:	Polyclonal
Reactivity:	Human, Mouse
Tested Applications:	WB
Host:	Rabbit
Recommended dilutions:	WB: 1/500 - 1/1000. Optimal dilutions/concentrations should be determined by the end user.
Conjugation:	Unconjugated
Immunogen:	A synthetic peptide of human CMTM3
Isotype:	IgG
Form:	Liquid
Purification:	Purified by affinity chromatography.
Storage:	Aliquot and store at -20°C. Avoid repeated freeze/thaw cycles.
UniProt Primary AC:	Q96MX0 (UniProt , ExPASy)

Datasheet

Version: 3.0.0
Revision date: 10 Apr 2025



Gene Symbol: CMTM3

GeneID: [123920](#)

KEGG: hsa:123920

String: [9606.ENSP00000400482](#)

Molecular Weight: Calculated MW: 20 kDa
Observed MW: 20 kDa

Buffer: PBS, pH 7.3, containing 0.02% sodium azide, 50% glycerol.

Concentration: > 0.2 mg/ml

Note: THIS PRODUCT IS FOR RESEARCH USE ONLY. NOT FOR USE IN DIAGNOSTIC, THERAPEUTIC OR COSMETIC PROCEDURES. NOT FOR HUMAN OR ANIMAL CONSUMPTION.

For Reference Only