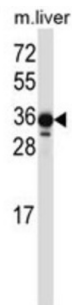


LIMS2 Antibody

Catalogue No.: abx027491



LIMS2 is a focal adhesion protein that associates with integrin-linked kinase (ILK; MIM 602366), a multidomain protein that mediates multiple protein-protein interactions at adhesion sites between cells and the extracellular matrix (ECM). [supplied by OMIM].

Target: LIMS2**Clonality:** Polyclonal**Reactivity:** Mouse**Tested Applications:** ELISA, WB**Host:** Rabbit**Recommended dilutions:** WB: 1/1000. Optimal dilutions/concentrations should be determined by the end user.**Conjugation:** Unconjugated**Immunogen:** KLH-conjugated synthetic peptide between 309-337 amino acids from the C-terminal region of human LIMS2.**Isotype:** IgG**Form:** Liquid**Purification:** Purified through a protein A column, followed by peptide affinity purification.**Storage:** Aliquot and store at -20°C. Avoid repeated freeze/thaw cycles.**UniProt Primary AC:** Q7Z4I7 ([UniProt](#), [ExPASy](#))**Gene Symbol:** LIMS2

Datasheet

Version: 2.0.0
Revision date: 23 Feb 2025



KEGG: hsa:55679

String: [9606.ENSP00000326888](#)

Molecular Weight: Calculated MW: 38.9 kDa

Buffer: PBS containing 0.09% sodium azide.

Note: This product is for research use only.

For Reference Only