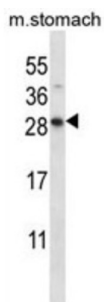


## Dolichyldiphosphatase 1 (DOLPP1) Antibody

Catalogue No.: abx027522



DOLPP1 is required for efficient N-glycosylation. Necessary for maintaining optimal levels of dolichol-linked oligosaccharides. Hydrolyzes dolichyl pyrophosphate at a very high rate and dolichyl monophosphate at a much lower rate. Does not act on phosphatidate (By similarity).

**Target:** Dolichyldiphosphatase 1 (DOLPP1)

**Clonality:** Polyclonal

**Reactivity:** Mouse

**Tested Applications:** ELISA, WB

**Host:** Rabbit

**Recommended dilutions:** WB: 1/1000. Optimal dilutions/concentrations should be determined by the end user.

**Conjugation:** Unconjugated

**Immunogen:** KLH-conjugated synthetic peptide between 207-236 amino acids from the C-terminal region of human DOLPP1.

**Isotype:** IgG

**Form:** Liquid

**Purification:** Purified through a protein A column, followed by peptide affinity purification.

**Storage:** Aliquot and store at -20°C. Avoid repeated freeze/thaw cycles.

**UniProt Primary AC:** Q86YN1 ([UniProt](#), [ExPASy](#))

**Gene Symbol:** DOLPP1

# Datasheet

Version: 2.0.0

Revision date: 24 Nov 2024



**KEGG:** hsa:57171

**String:** [9606.ENSP00000361625](#)

**Molecular Weight:** Calculated MW: 27 kDa

**Buffer:** PBS containing 0.09% sodium azide.

**Note:** This product is for research use only.

For Reference Only