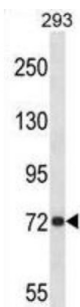
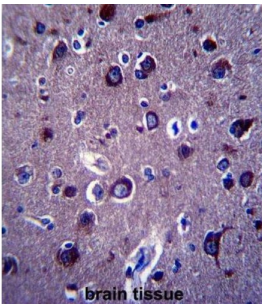
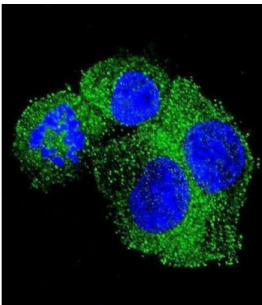


## Beta-Amyloid Precursor Protein (APP) Antibody

Catalogue No.: abx027538



This gene encodes a cell surface receptor and transmembrane precursor protein that is cleaved by secretases to form a number of peptides. Some of these peptides are secreted and can bind to the acetyltransferase complex APBB1/TIP60 to promote transcriptional activation, while others form the protein basis of the amyloid plaques found in the brains of patients with Alzheimer disease. Mutations in this gene have been implicated in autosomal dominant Alzheimer disease and cerebroarterial amyloidosis (cerebral amyloid angiopathy). Multiple transcript variants encoding several different isoforms have been found for this gene.

**Target:** Beta-Amyloid Precursor Protein (APP)

**Clonality:** Polyclonal

**Reactivity:** Human

**Tested Applications:** ELISA, WB, IHC, IF/ICC

**Host:** Rabbit

# Datasheet

Version: 2.0.0  
Revision date: 18 Sep 2024



**Recommended dilutions:** WB: 1/1000, IHC-P: 1/10 - 1/50, IF/ICC: 1/10 - 1/50. Not tested in IHC-F. Optimal dilutions/concentrations should be determined by the end user.

**Conjugation:** Unconjugated

**Immunogen:** KLH-conjugated synthetic peptide between 333-362 amino acids from the Central region of human APP.

**Isotype:** IgG

**Form:** Liquid

**Purification:** Purified through a protein A column, followed by peptide affinity purification.

**Storage:** Aliquot and store at -20°C. Avoid repeated freeze/thaw cycles.

**UniProt Primary AC:** P05067 ([UniProt](#), [Expasy](#))

**Molecular Weight:** Calculated MW: 86.9 kDa

**Buffer:** PBS containing 0.09% sodium azide.

**Note:** This product is for research use only.

For Reference Only