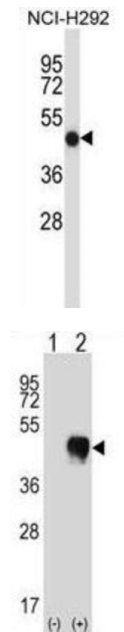


Fc Fragment of IgG, Low Affinity Ila, Receptor / CD32 (FCGR2A) Antibody

Catalogue No.: abx027561



This gene encodes one member of a family of immunoglobulin Fc receptor genes found on the surface of many immune response cells. The protein encoded by this gene is a cell surface receptor found on phagocytic cells such as macrophages and neutrophils, and is involved in the process of phagocytosis and clearing of immune complexes. Alternative splicing results in multiple transcript variants.

Target: Fc Fragment of IgG, Low Affinity Ila, Receptor / CD32 (FCGR2A)

Clonality: Polyclonal

Reactivity: Human

Tested Applications: ELISA, WB

Host: Rabbit

Recommended dilutions: WB: 1/1000. Optimal dilutions/concentrations should be determined by the end user.

Conjugation: Unconjugated

Immunogen: KLH-conjugated synthetic peptide between 256-285 amino acids from the C-terminal region of human FCGR2A.

Isotype: IgG

Datasheet

Version: 2.0.0

Revision date: 11 Feb 2025



Form:	Liquid
Purification:	Purified through a protein A column, followed by peptide affinity purification.
Storage:	Aliquot and store at -20°C. Avoid repeated freeze/thaw cycles.
UniProt Primary AC:	P12318 (UniProt , ExPASy)
Molecular Weight:	Calculated MW: 35 kDa
Buffer:	PBS containing 0.09% sodium azide.
Note:	This product is for research use only.

For Reference Only