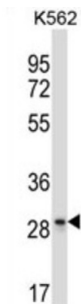


# Leukocyte Associated Immunoglobulin Like Receptor 1 (LAIR1) Antibody

Catalogue No.: abx027605



The protein encoded by this gene is an inhibitory receptor found on peripheral mononuclear cells, including NK cells, T cells, and B cells. Inhibitory receptors regulate the immune response to prevent lysis of cells recognized as self. The gene is a member of both the immunoglobulin superfamily and the leukocyte-associated inhibitory receptor family. The gene maps to a region of 19q13.4 called the leukocyte receptor cluster, which contains at least 29 genes encoding leukocyte-expressed receptors of the immunoglobulin superfamily.

|                               |  |
|-------------------------------|--|
| <b>Target:</b>                | Leukocyte Associated Immunoglobulin Like Receptor 1 (LAIR1)  |
| <b>Clonality:</b>             | Polyclonal   |
| <b>Reactivity:</b>            | Human  |
| <b>Tested Applications:</b>   | ELISA, WB  |
| <b>Host:</b>                  | Rabbit   |
| <b>Recommended dilutions:</b> | WB: 1/1000. Optimal dilutions/concentrations should be determined by the end user.                   |
| <b>Conjugation:</b>           | Unconjugated   |
| <b>Immunogen:</b>             | KLH-conjugated synthetic peptide between 177-206 amino acids from the Central region of human LAIR1. |
| <b>Isotype:</b>               | IgG  |
| <b>Form:</b>                  | Liquid   |
| <b>Purification:</b>          | Purified through a protein A column, followed by peptide affinity purification.                      |
| <b>Storage:</b>               | Aliquot and store at -20°C. Avoid repeated freeze/thaw cycles.                                       |
| <b>UniProt Primary AC:</b>    | Q6GTX8 ( <a href="#">UniProt</a> , <a href="#">ExPASy</a> )  |

# Datasheet

Version: 2.0.0

Revision date: 12 Mar 2025



**KEGG:** hsa:3903

**String:** [9606.ENSP00000375622](#)

**Molecular Weight:** Calculated MW: 31.4 kDa

**Buffer:** PBS containing 0.09% sodium azide.

**Note:** THIS PRODUCT IS FOR RESEARCH USE ONLY. NOT FOR USE IN DIAGNOSTIC, THERAPEUTIC OR COSMETIC PROCEDURES. NOT FOR HUMAN OR ANIMAL CONSUMPTION.

For Reference Only