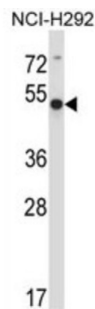


Actin-Related Protein 6 (ACTR6) Antibody

Catalogue No.: abx027669



ACTR6 belongs to the actin family.

Target: Actin-Related Protein 6 (ACTR6)

Clonality: Polyclonal

Reactivity: Human

Tested Applications: ELISA, WB

Host: Rabbit

Recommended dilutions: WB: 1/1000. Optimal dilutions/concentrations should be determined by the end user.

Conjugation: Unconjugated

Immunogen: KLH-conjugated synthetic peptide between 346-374 amino acids from the C-terminal region of human ACTR6.

Isotype: IgG

Form: Liquid

Purification: Purified through a protein A column, followed by peptide affinity purification.

Storage: Aliquot and store at -20°C. Avoid repeated freeze/thaw cycles.

UniProt Primary AC: Q9GZN1 ([UniProt](#), [ExPASy](#))

Gene Symbol: ACTR6

String: [9606.ENSP00000188312](#)

Datasheet

Version: 1.0.0
Revision date: 06 Oct 2024



Molecular Weight: Calculated MW: 45.8 kDa

Buffer: PBS containing 0.09% sodium azide.

Specificity: Predicted to react with Mouse and Chicken ACTR6.

Note: This product is for research use only.

For Reference Only