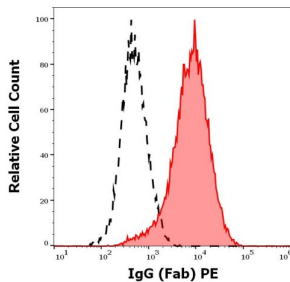
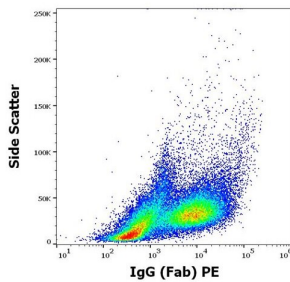


## Programmed Cell Death Protein 1 (PDCD1) Antibody (PE)

Catalogue No.: abx140362



Flow cytometry analysis of human PHA stimulated peripheral whole blood with PDCD1 antibody conjugated to PE.



CD279 Antibody is a Mouse Monoclonal against CD279.

**Target:** Programmed Cell Death Protein 1 (PDCD1)

**Clonality:** Monoclonal

**Clone:** T972

**Reactivity:** Human, Monkey

**Tested Applications:** FCM

**Host:** Mouse

**Recommended dilutions:** FCM: 10  $\mu$ l/100  $\mu$ l of whole blood or 10<sup>6</sup> cells. Validated in IHC-F. Optimal dilutions/concentrations should be determined by the end user.

**Conjugation:** PE

**Excitation/Emission:** 565/575

**Laser Line:** 550

**Isotype:** IgG<sub>1</sub> Kappa

# Datasheet

Version: 4.0.0  
Revision date: 25 Apr 2025



<b>Storage:</b>	Store in the dark at 2-8°C. Avoid exposure to light. Do not freeze.
<b>UniProt Primary AC:</b>	Q15116 ( <a href="#">UniProt</a> , <a href="#">ExPASy</a> )
<b>Gene Symbol:</b>	PDCD1
<b>GeneID:</b>	<a href="#">5133</a>
<b>KEGG:</b>	hsa:5133
<b>String:</b>	<a href="#">9606.ENSP00000335062</a>
<b>Buffer:</b>	Stabilizing PBS solution containing 15 mM sodium azide.
<b>Specificity:</b>	The mouse monoclonal antibody recognizes CD279 / PD-1 (programmed cell death 1), a 55 kDa type I transmembrane protein expressed above all during T cell development, on activated T cells, activated B cells, and activated monocytes.
<b>Note:</b>	THIS PRODUCT IS FOR RESEARCH USE ONLY. NOT FOR USE IN DIAGNOSTIC, THERAPEUTIC OR COSMETIC PROCEDURES. NOT FOR HUMAN OR ANIMAL CONSUMPTION.

For Reference Only