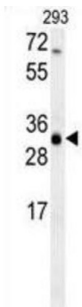
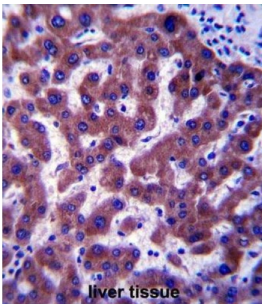


## Methylsterol Monooxygenase 1 (MSMO1) Antibody

Catalogue No.: abx027706



WB analysis of 293 cell line lysates.



IHC-P analysis of human liver tissue, with DAB staining.

ERG25/MSMO1 is a sterol-C4-methyl oxidase-like protein isolated based on its similarity to the yeast ERG25 protein. It contains a set of putative metal binding motifs with similarity to that seen in a family of membrane desaturases-hydroxylases. The protein is localized to the endoplasmic reticulum membrane and is believed to function in cholesterol biosynthesis. Alternatively spliced transcript variants encoding distinct isoforms have been found for this gene.

**Target:** Methylsterol Monooxygenase 1 (MSMO1)**Clonality:** Polyclonal**Reactivity:** Human**Tested Applications:** ELISA, WB, IHC**Host:** Rabbit**Recommended dilutions:** WB: 1/1000, IHC-P: 1/10 - 1/50. Not tested in IHC-F. Optimal dilutions/concentrations should be determined by the end user.**Conjugation:** Unconjugated**Immunogen:** KLH-conjugated synthetic peptide between 264-293 amino acids from the C-terminal region of human ERG25.**Isotype:** IgG

# Datasheet

Version: 7.0.0  
Revision date: 13 Mar 2025



**Form:** Liquid

**Purification:** Purified through a protein A column, followed by peptide affinity purification.

**Storage:** Aliquot and store at -20°C. Avoid repeated freeze/thaw cycles.

**UniProt Primary AC:** Q15800 ([UniProt](#), [ExPASy](#))

**Gene Symbol:** MSMO1

**GeneID:** [6307](#)

**OMIM:** [607545](#)

**HGNC:** 10545

**KEGG:** hsa:6307

**Ensembl:** ENSG00000052802

**String:** [9606.ENSP00000261507](#)

**Molecular Weight:** Calculated MW: 35.2 kDa

**Buffer:** PBS containing 0.09% sodium azide.

**Concentration:** 0.5 mg/ml

**Note:** THIS PRODUCT IS FOR RESEARCH USE ONLY. NOT FOR USE IN DIAGNOSTIC, THERAPEUTIC OR COSMETIC PROCEDURES. NOT FOR HUMAN OR ANIMAL CONSUMPTION.

For Reference Only