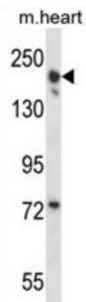


Leucine-Rich Repeat-Containing Protein 16B (LRRC16B) Antibody

Catalogue No.: abx027739



The exact function of this protein remains unknown.

Target:	Leucine-Rich Repeat-Containing Protein 16B (LRRC16B)
Clonality:	Polyclonal
Reactivity:	Mouse
Tested Applications:	ELISA, WB
Host:	Rabbit
Recommended dilutions:	WB: 1/1000. Optimal dilutions/concentrations should be determined by the end user.
Conjugation:	Unconjugated
Immunogen:	KLH-conjugated synthetic peptide between 1344-1372 amino acids from the C-terminal region of human LRRC16B.
Isotype:	IgG
Form:	Liquid
Purification:	Purified through a protein A column, followed by peptide affinity purification.
Storage:	Aliquot and store at -20°C. Avoid repeated freeze/thaw cycles.
UniProt Primary AC:	Q8ND23 (UniProt , ExpASY)
Gene Symbol:	CARMIL3
KEGG:	hsa:90668

Datasheet

Version: 1.0.0
Revision date: 11 Feb 2025



String: [9606.ENSF00000340467](#)

Molecular Weight: Calculated MW: 150 kDa

Buffer: PBS containing 0.09% sodium azide.

Note: This product is for research use only.

For Reference Only