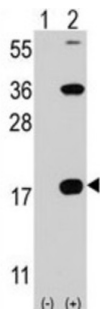


## T-Cell Surface Glycoprotein CD3 Zeta Chain (CD247) Antibody

Catalogue No.: abx027825



T-cell receptor zeta, together with T-cell receptor alpha/beta and gamma/delta heterodimers, and with CD3-gamma, delta and epsilon, forms the T-cell receptor-CD3 complex. The zeta chain plays an important role in coupling antigen recognition to several intracellular signal-transduction pathways. Low expression of the antigen results in impaired immune response.

<b>Target:</b>	T-Cell Surface Glycoprotein CD3 Zeta Chain (CD247)
<b>Clonality:</b>	Polyclonal
<b>Reactivity:</b>	Human, Mouse
<b>Tested Applications:</b>	ELISA, WB, FCM
<b>Host:</b>	Rabbit
<b>Recommended dilutions:</b>	WB: 1/4000 - 1/8000, FCM: 1/25. Optimal dilutions/concentrations should be determined by the end user.
<b>Conjugation:</b>	Unconjugated
<b>Immunogen:</b>	KLH-conjugated synthetic peptide between 113-141 amino acids from the C-terminal region of human CD3Z.
<b>Isotype:</b>	IgG
<b>Form:</b>	Liquid
<b>Purification:</b>	Purified through a protein A column, followed by peptide affinity purification.
<b>Storage:</b>	Aliquot and store at -20°C. Avoid repeated freeze/thaw cycles.
<b>UniProt Primary AC:</b>	P20963 ( <a href="#">UniProt</a> , <a href="#">ExPASy</a> )
<b>Gene Symbol:</b>	CD3Z

# Datasheet

Version: 2.0.0  
Revision date: 13 Sep 2024



---

<b>Molecular Weight:</b>	Calculated MW: 18.7 kDa
<b>Buffer:</b>	PBS containing 0.09% sodium azide.
<b>Specificity:</b>	Predicted to react with Pig CD247.
<b>Note:</b>	This product is for research use only.

For Reference Only