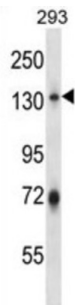


Ring Finger Protein 20 (RNF20) Antibody

Catalogue No.: abx027866



The protein encoded by this gene shares similarity with BRE1 of *S. cerevisiae*. Yeast BRE1 is a ubiquitin ligase required for the ubiquitination of histone H2B and the methylation of histone H3.

Target: Ring Finger Protein 20 (RNF20)

Clonality: Polyclonal

Reactivity: Human

Tested Applications: ELISA, WB

Host: Rabbit

Recommended dilutions: WB: 1/1000. Optimal dilutions/concentrations should be determined by the end user.

Conjugation: Unconjugated

Immunogen: KLH-conjugated synthetic peptide between 117-146 amino acids from the N-terminal region of human RNF20.

Isotype: IgG

Form: Liquid

Purification: Purified through a protein A column, followed by peptide affinity purification.

Storage: Aliquot and store at -20°C. Avoid repeated freeze/thaw cycles.

UniProt Primary AC: Q5VTR2 ([UniProt](#), [ExPASy](#))

KEGG: hsa:56254

Datasheet

Version: 2.0.0
Revision date: 26 Sep 2024



String: [9606.ENSF00000373772](#)

Molecular Weight: Calculated MW: 114 kDa

Buffer: PBS containing 0.09% sodium azide.

Specificity: Predicted to react with Mouse and Cow RNF20.

Note: This product is for research use only.

For Reference Only