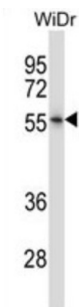


## Photoreceptor Cell Specific Nuclear Receptor / PNR (NR2E3) Antibody

Catalogue No.: abx027877



This protein is part of a large family of nuclear receptor transcription factors involved in signaling pathways. Nuclear receptors have been shown to regulate pathways involved in embryonic development, as well as in maintenance of proper cell function in adults. Members of this family are characterized by discrete domains that function in DNA and ligand binding. This gene encodes a retinal nuclear receptor that is a ligand-dependent transcription factor. Defects in this gene are a cause of enhanced S cone syndrome. Alternatively spliced transcript variants encoding different isoforms have been identified.

<b>Target:</b>	Photoreceptor Cell Specific Nuclear Receptor / PNR (NR2E3)
<b>Clonality:</b>	Polyclonal
<b>Reactivity:</b>	Human
<b>Tested Applications:</b>	ELISA, WB
<b>Host:</b>	Rabbit
<b>Recommended dilutions:</b>	WB: 1/1000. Optimal dilutions/concentrations should be determined by the end user.
<b>Conjugation:</b>	Unconjugated
<b>Immunogen:</b>	KLH-conjugated synthetic peptide between 170-198 amino acids from the Central region of human NR2E3.
<b>Isotype:</b>	IgG
<b>Form:</b>	Liquid
<b>Purification:</b>	Purified through a protein A column, followed by peptide affinity purification.
<b>Storage:</b>	Aliquot and store at -20°C. Avoid repeated freeze/thaw cycles.
<b>UniProt Primary AC:</b>	Q9Y5X4 ( <a href="#">UniProt</a> , <a href="#">ExpASY</a> )

# Datasheet

Version: 2.0.0

Revision date: 05 Feb 2025



**Gene Symbol:** NR2E3

**String:** [9606.ENSF00000482504](#)

**Molecular Weight:** Calculated MW: 44.7 kDa

**Buffer:** PBS containing 0.09% sodium azide.

**Specificity:** Predicted to react with Cow NR2E3.

**Note:** This product is for research use only.

For Reference Only