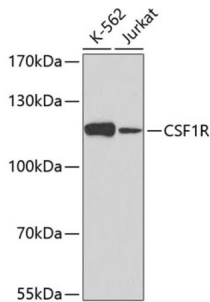


Macrophage Colony-Stimulating Factor 1 Receptor (CSF1R) Antibody

Catalogue No.: abx002189



Western blot analysis of extracts of various cell lines using CSF1R Antibody (1/50 dilution).

CSF1R Antibody is a Rabbit Polyclonal antibody against CSF1R. The protein encoded by this gene is the receptor for colony stimulating factor 1, a cytokine which controls the production, differentiation, and function of macrophages. This receptor mediates most if not all of the biological effects of this cytokine. Ligand binding activates the receptor kinase through a process of oligomerization and transphosphorylation. The encoded protein is a tyrosine kinase transmembrane receptor and member of the CSF1/PDGF receptor family of tyrosine-protein kinases. Mutations in this gene have been associated with a predisposition to myeloid malignancy. The first intron of this gene contains a transcriptionally inactive ribosomal protein L7 processed pseudogene oriented in the opposite direction.

Target:	Macrophage Colony-Stimulating Factor 1 Receptor (CSF1R)
Clonality:	Polyclonal
Reactivity:	Human, Mouse, Rat
Tested Applications:	WB
Host:	Rabbit
Recommended dilutions:	WB: 1/500 - 1/2000. Optimal dilutions/concentrations should be determined by the end user.
Conjugation:	Unconjugated
Immunogen:	A synthetic peptide corresponding to human CSF1R
Isotype:	IgG
Form:	Liquid
Purification:	Purified by affinity chromatography.
Storage:	Aliquot and store at -20°C. Avoid repeated freeze/thaw cycles.
UniProt Primary AC:	P07333 (UniProt , ExPASy)

Datasheet

Version: 3.0.0
Revision date: 12 Mar 2025



Gene Symbol: CSF1R

GeneID: [1436](#)

NCBI Accession: NP_005202.2

KEGG: hsa:1436

String: [9606.ENSP00000286301](#)

Molecular Weight: Calculated MW: 33 kDa/107 kDa
Observed MW: 117 kDa

Buffer: PBS, pH 7.3, containing 0.02% sodium azide, 50% glycerol.

Concentration: 1 mg/ml

Note: THIS PRODUCT IS FOR RESEARCH USE ONLY. NOT FOR USE IN DIAGNOSTIC, THERAPEUTIC OR COSMETIC PROCEDURES. NOT FOR HUMAN OR ANIMAL CONSUMPTION.

For Reference Only