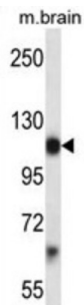


# Datasheet

Version: 1.0.0  
Revision date: 13 Mar 2025

## Mouse Pdgfra Antibody

Catalogue No.: abx027914



Receptor that binds both PDGFA and PDGFB and has a tyrosine-protein kinase activity.

**Target:** Mouse Pdgfra

**Clonality:** Polyclonal

**Reactivity:** Mouse

**Tested Applications:** ELISA, WB

**Host:** Rabbit

**Recommended dilutions:** WB: 1/1000. Optimal dilutions/concentrations should be determined by the end user.

**Conjugation:** Unconjugated

**Immunogen:** KLH-conjugated synthetic peptide between 678-706 amino acids from the Central region of mouse Pdgfra.

**Isotype:** IgG

**Form:** Liquid

**Purification:** Purified through a protein A column, followed by peptide affinity purification.

**Storage:** Aliquot and store at -20°C. Avoid repeated freeze/thaw cycles.

**UniProt Primary AC:** P26618 ([UniProt](#), [ExPASy](#))

**KEGG:** mmu:18595

**String:** [10090.ENSMUSP00000127173](#)

# Datasheet

Version: 1.0.0

Revision date: 13 Mar 2025



**Molecular Weight:** Calculated MW: 123 kDa

**Buffer:** PBS containing 0.09% sodium azide.

**Note:** THIS PRODUCT IS FOR RESEARCH USE ONLY. NOT FOR USE IN DIAGNOSTIC, THERAPEUTIC OR COSMETIC PROCEDURES. NOT FOR HUMAN OR ANIMAL CONSUMPTION.

For Reference Only