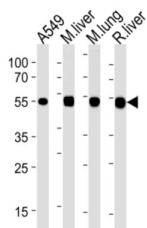
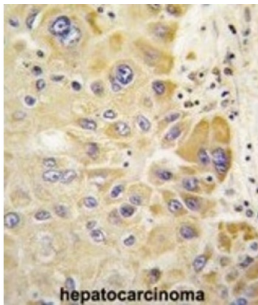


Aldehyde Dehydrogenase, Mitochondrial (ALDH2) Antibody

Catalogue No.: abx027971



ALDH2 belongs to the aldehyde dehydrogenase family of proteins. Aldehyde dehydrogenase is the second enzyme of the major oxidative pathway of alcohol metabolism. Two major liver isoforms of this enzyme, cytosolic and mitochondrial, can be distinguished by their electrophoretic mobilities, kinetic properties, and subcellular localizations. Most Caucasians have two major isozymes, while approximately 50% of Asians have only the cytosolic isozyme, missing the mitochondrial isozyme. A remarkably higher frequency of acute alcohol intoxication among Asians than among Caucasians could be related to the absence of the mitochondrial isozyme.

Target:	Aldehyde Dehydrogenase, Mitochondrial (ALDH2)
Clonality:	Polyclonal
Reactivity:	Human
Tested Applications:	ELISA, WB, IHC
Host:	Rabbit
Recommended dilutions:	WB: 1/2000, IHC-P: 1/10 - 1/50. Not tested in IHC-F. Optimal dilutions/concentrations should be determined by the end user.
Conjugation:	Unconjugated
Immunogen:	KLH-conjugated synthetic peptide between 318-347 amino acids from the Central region of human ALDH2.
Isotype:	IgG

Datasheet

Version: 1.0.0
Revision date: 03 Dec 2024



Form:	Liquid
Purification:	Purified through a protein A column, followed by peptide affinity purification.
Storage:	Aliquot and store at -20°C. Avoid repeated freeze/thaw cycles.
UniProt Primary AC:	P05091 (UniProt , ExpASY)
NCBI Accession:	NP_000681.2, NP_001191818.1
KEGG:	hsa:217
String:	9606.ENSP00000261733
Molecular Weight:	Calculated MW: 56.4 kDa
Buffer:	PBS containing 0.09% sodium azide.
Specificity:	Predicted to react with Mouse and Rat ALDH2.
Note:	This product is for research use only.

For Reference Only