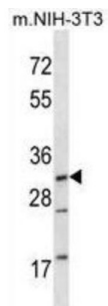
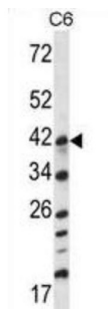
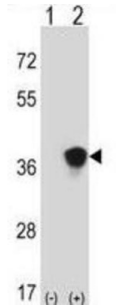


Dual Specificity Mitogen-Activated Protein Kinase Kinase 3 (Map2k3) Antibody

Catalogue No.: abx028056



Dual specificity kinase. Is activated by cytokines and environmental stress in vivo. Catalyzes the concomitant phosphorylation of a threonine and a tyrosine residue in the MAP kinase p38 (By similarity).

Target: Dual Specificity Mitogen-Activated Protein Kinase Kinase 3 (Map2k3)

Clonality: Polyclonal

Reactivity: Human, Mouse

Tested Applications: ELISA, WB

Host: Rabbit

Recommended dilutions: WB: 1/1000. Optimal dilutions/concentrations should be determined by the end user.

Datasheet

Version: 2.0.0
Revision date: 23 Feb 2025



Conjugation:	Unconjugated
Immunogen:	KLH-conjugated synthetic peptide between 132-160 amino acids from the Central region of mouse Map2k3.
Isotype:	IgG
Form:	Liquid
Purification:	Purified through a protein A column, followed by peptide affinity purification.
Storage:	Aliquot and store at -20°C. Avoid repeated freeze/thaw cycles.
UniProt Primary AC:	O09110 (UniProt , ExPASy)
KEGG:	mmu:26397
String:	10090.ENSMUSP00000019076
Molecular Weight:	Calculated MW: 39.3 kDa
Buffer:	PBS containing 0.09% sodium azide.
Note:	This product is for research use only.

For Reference Only