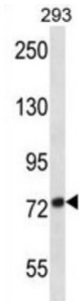


## Disintegrin And Metalloproteinase Domain-Containing Protein 32 (ADAM32) Antibody

Catalogue No.: abx028107



ADAM32 may play a role in sperm development and fertilization. This is a non-catalytic metalloprotease-like protein (By similarity).

<b>Target:</b>	Disintegrin And Metalloproteinase Domain-Containing Protein 32 (ADAM32)
<b>Clonality:</b>	Polyclonal
<b>Reactivity:</b>	Human
<b>Tested Applications:</b>	ELISA, WB
<b>Host:</b>	Rabbit
<b>Recommended dilutions:</b>	WB: 1/1000. Optimal dilutions/concentrations should be determined by the end user.
<b>Conjugation:</b>	Unconjugated
<b>Immunogen:</b>	KLH-conjugated synthetic peptide between 141-169 amino acids from the N-terminal region of human ADAM32.
<b>Isotype:</b>	IgG
<b>Form:</b>	Liquid
<b>Purification:</b>	Purified through a protein A column, followed by peptide affinity purification.
<b>Storage:</b>	Aliquot and store at -20°C. Avoid repeated freeze/thaw cycles.
<b>UniProt Primary AC:</b>	Q8TC27 ( <a href="#">UniProt</a> , <a href="#">ExPASy</a> )
<b>Gene Symbol:</b>	ADAM32

# Datasheet

Version: 2.0.0  
Revision date: 19 Sep 2024



**KEGG:** hsa:203102

**String:** [9606.ENSP00000369238](#)

**Molecular Weight:** Calculated MW: 87.9 kDa

**Buffer:** PBS containing 0.09% sodium azide.

**Note:** This product is for research use only.

For Reference Only