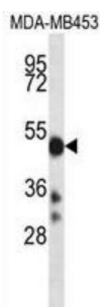
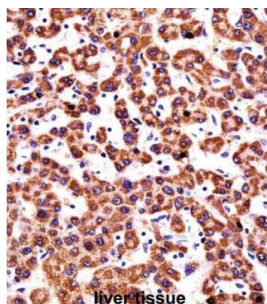


Cytochrome P450 2D6 (CYP2D6) Antibody

Catalogue No.: abx028111



This gene encodes a member of the cytochrome P450 superfamily of enzymes. The cytochrome P450 proteins are monooxygenases which catalyze many reactions involved in drug metabolism and synthesis of cholesterol, steroids and other lipids. This protein localizes to the endoplasmic reticulum and is known to metabolize as many as 20% of commonly prescribed drugs. Its substrates include debrisoquine, an adrenergic-blocking drug; sparteine and propafenone, both anti-arrhythmic drugs; and amitriptyline, an anti-depressant. The gene is highly polymorphic in the population; certain alleles result in the poor metabolizer phenotype, characterized by a decreased ability to metabolize the enzyme's substrates. The gene is located near two cytochrome P450 pseudogenes on chromosome 22q13.1. Alternatively spliced transcript variants encoding different isoforms have been found for this gene.

Target: Cytochrome P450 2D6 (CYP2D6)

Clonality: Polyclonal

Reactivity: Human

Tested Applications: ELISA, WB, IHC

Host: Rabbit

Recommended dilutions: WB: 1/1000, IHC-P: 1/10 - 1/50. Not tested in IHC-F. Optimal dilutions/concentrations should be determined by the end user.

Conjugation: Unconjugated

Immunogen: KLH-conjugated synthetic peptide between 76-105 amino acids from the N-terminal region of human CYP2D6.

Datasheet

Version: 3.0.0
Revision date: 27 Apr 2025



Isotype:	IgG
Form:	Liquid
Purification:	Purified through a protein A column, followed by peptide affinity purification.
Storage:	Aliquot and store at -20°C. Avoid repeated freeze/thaw cycles.
UniProt Primary AC:	P10635 (UniProt , ExPASy)
Gene Symbol:	CYP2D6
GeneID:	1565
OMIM:	124030
HGNC:	2625
KEGG:	hsa:1565
Ensembl:	ENSG00000100197
String:	9606.ENSP00000353820
Molecular Weight:	Calculated MW: 55.8 kDa
Buffer:	PBS containing 0.09% sodium azide.
Specificity:	Predicted to react with Rat CYP2D6.
Note:	THIS PRODUCT IS FOR RESEARCH USE ONLY. NOT FOR USE IN DIAGNOSTIC, THERAPEUTIC OR COSMETIC PROCEDURES. NOT FOR HUMAN OR ANIMAL CONSUMPTION.